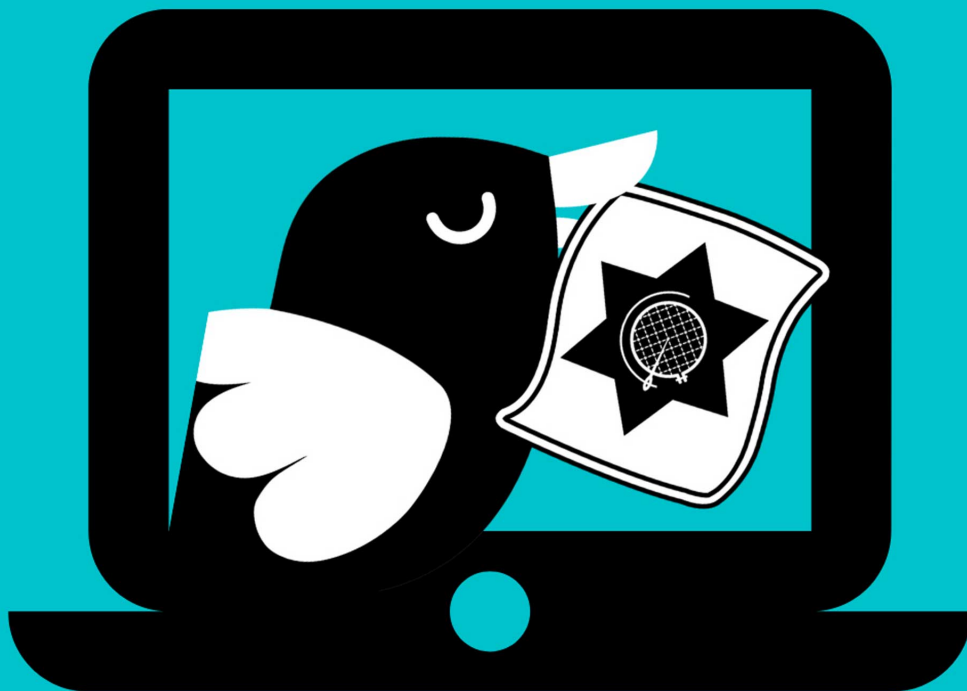


# Sydney Quilt Show 2021 Online Catalogue

*Celebrate Creativity*



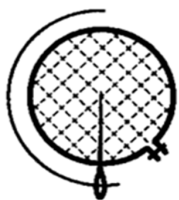
presented by



## QuiltNSW

Awards Ceremony  
Live streaming on YouTube  
from 7.30pm 28 October 2021

[www.quiltnsw.com](http://www.quiltnsw.com)



# Sydney Quilt Show 2021

## Online

### Table of Contents

#### QuiltNSW Committee 2020/2021

Mandie Tyler  
Lara Moo  
Lauren McGoogan  
Andrea Beattie  
Carmen Dettino  
Rhonda Langhorne

#### Exhibition Sub-committee

Rhonda Langhorne  
Robin Allan  
Donna Boland  
Catherine Butterworth  
Jane Gibson  
Deborah Laurie  
Sandra Lyons  
Catherine Porter  
Carolyn Rawson  
Gail Sadleir  
Brenda Gael Smith

#### Drop Off Volunteers

Danuta Aaron	Deborah Laurie
Robin Allan	Sandra Lyons
Cath Babidge	Vicki Martyn
Jill Chilton	Lauren McGoogan
Kerry Dear	QNSW Office
Maree Gebhardt	Marianne Roberts
Katrina	Elizabeth Rose
Hadjimichael	Brenda Gael
Leanne Harvey	SmithMargy Syrett
Lynn Hewitt	Maureen Teager
Beverly Hunter	Sharon Thomson
Suzanne Laird	Chris Timmins
Roslyn Lambert	Jessica Wheelahan
Rhonda Langhorne	Glenda Wise

President's Message	2
Sponsors Listing	3
Awards, Categories & Prizes	5
Members' Exhibition Quilt Listing	8
Index of Exhibitors	30
Quilts by Category	32
Commercial Quilters	33

#### QuiltNSW Super Raffle 2021

##### Tea Rose by Susanne Cody.

Hand pieced and designed by Sue who drew her inspiration from a medallion quilt in 'Old Nova Scotian Quilts' by Sharon MacDonald and Scott Robson.

Hand Quilted by Katynka Powning Hand quilting service.

Follow Sue on Instagram [@dragonfly.studio](#)

Follow Katynka on Instagram [@handquiltingsservice](#)

Cover photography: Les Harvey

##### Narrawallee Star

Machine pieced by three anonymous award winning QuiltNSW members. The quilt was constructed using a Laundry Basket pattern and kit titled California.

Custom quilted by Kaye Jamieson of Quilting Quarters.

Follow Kaye Jamieson on Instagram [@quiltingquarters](#)

*The proceeds of our annual raffle fund QuiltNSW programs such as the scholarship grants and country tutor programs.*

##### The QuiltNSW Super Raffle was drawn on 17<sup>th</sup> September

- 1st Prize:** Tea Rose \$4500 Made by Susanne Cody, Quilted by Katynka Powning  
*won by Tricia Southwell*
- 2<sup>nd</sup> Prize** Narrawallee Star \$3000 Made by Anonymous QuiltNSW members, quilted by Kaye Jamieson of Quilting Quarters  
*won by Narelle Sims*
- 3<sup>rd</sup> Prize** BERNINA Model 325 \$1499 sponsored by BERNINA Australia  
*won by Jenny Roberts*
- 4<sup>th</sup> Prize** Quilters Basket \$350  
*won by Wanda Campbell*
- 5<sup>th</sup> Prize** Horn Sewing Chair \$279 sponsored by Horn Australia  
*won by Trudy Brodie*

#### QuiltNSW

Level 5, 276 Pitt Street, Sydney NSW 2000  
Tel: (02) 9283 3737 Fax: (02) 9283 3274  
Email: [office@quiltNSW.com](mailto:office@quiltNSW.com)  
[www.quiltNSW.com](http://www.quiltNSW.com)

# Sydney Quilt Show 2021 Online

## President's Message

Welcome to the Sydney Quilt show 2021, after COVID-19 prevented us holding a physical show, we are excited to hold an exceptional show in a Virtual format.

The theme for this year's show is "Celebrate Creativity".

What would we have done without our craft and creativity to help us through these difficult times? We found new ways to connect with our sewing groups and kept making. How exciting it will be when we are able to come together once again.

The show brings together our quilting community to showcase excellence in our craft and displays what we can achieve as a community. The response to the difficult past 2 years has illustrated how we, without question or hesitation, rally around as a community and give whatever is needed.

We have 258 quilts in our Virtual show. So please enjoy our world class Sydney Quilt Show 2021.

The raffle had two quilts this year:

Tea Rose – donated by QuiltNSW member Sue Cody, inspired by a medallion quilt in "Old Nova Scotian Quilts" by Sharon MacDonald and Scott Robson, hand pieced in reproduction fabrics and hand quilted by Katynka Powning Hand Quilting Service.

The Narrawallee Star – donated by an anonymous trio of QuiltNSW winning members and customs quilted by Quilting Quarters, as a way of giving back to their community. It is from a traditional pattern from Laundry Basket called "California" but uses a contemporary colour scheme.

Our principal Sponsor BERNINA have once again supported us and helped make this show a success. All our sponsors are listed in the catalogue please support them and their businesses. We thank all our sponsors for their continued support despite times that have been difficult for business.

I would like to thank my Executive Committee this year and last year, they have been vital in helping to keep the wheels turning in what has been a harrowing time.

QuiltNSW could not do anything without our volunteers all doing their bit, thank you!

Finally, a massive thank you to the Exhibition Committee, led by Rhonda Langhorne. The hours that were spent on a show that was not able to be held and then preparing for a show in a new venue and then creating a virtual show.

Mandie Tyler

President

**BERNINA**  
*made to create*

# Sponsors Listing

## PRINCIPAL SPONSOR

### BERNINA Australia

Contact: Greg Alexander  
PO Box 268 0298991188  
Castle Hill NSW 1765  
[www.bernina.com/en-AU/Home-Australia](http://www.bernina.com/en-AU/Home-Australia)

## SPONSORS

**Art N Quilting Studio** Contact: Sandra Kelly  
90 Sandy Beach Dr 02 6656 0788  
Sandy Beach NSW, 2456  
Email: [artnquiltingstudio@bigpond.com](mailto:artnquiltingstudio@bigpond.com)  
[www.artnquiltingstudio.com.au](http://www.artnquiltingstudio.com.au)

Batik Oetoro Contact: Lynne Britten  
3/11 Nevin Close 02 4943 8808  
Gateshead NSW, 2290  
Email: [sales@dyeman.com](mailto:sales@dyeman.com)  
[www.dyeman.com](http://www.dyeman.com)

**BeBe Bold** Contact: Jane McDonald  
25 Elton St 02 6621 9188  
Lismore NSW, 2480  
Email: [bebebold@bigpond.com](mailto:bebebold@bigpond.com)  
[www.bebebold.com](http://www.bebebold.com)

**Berry Quilt and Co** Contact: Sharon Thomson  
5/66 Albert St 02 4464 3387  
Berry NSW, 2535  
Email: [sharon@berryquiltandco.com.au](mailto:sharon@berryquiltandco.com.au)  
[www.berryquiltandco.com.au](http://www.berryquiltandco.com.au)

**Cottage Quiltworks** Contact: Gerri Johns  
Suite 4205, 4 Daydream St 02 9997 4661  
Warriewood NSW, 2104  
Email: [gerrijohns@optusnet.com.au](mailto:gerrijohns@optusnet.com.au)  
[www.cottagequiltworks.com.au](http://www.cottagequiltworks.com.au)

**Deborah Louie** Contact: Deborah Louie  
98 Georges River Cres 0414 406 009  
Oyster Bay NSW, 2225  
Email: [deborah@deborahlouie.com.au](mailto:deborah@deborahlouie.com.au)  
[www.deborahlouie.com.au](http://www.deborahlouie.com.au)

**Digital Cloth** Contact: Caroline Sharkey  
11 Bellingen Street 0422 056 119  
Urunga NSW, 2455  
Email: [csharkey@westnet.com.au](mailto:csharkey@westnet.com.au)  
[www.textilertreats.com.au](http://www.textilertreats.com.au)

**Fabric Garden** Contact: Sue Miller  
4/145A Kurraba Rd 0417 068 855  
Neutral Bay NSW, 2089  
Email: [suehmiller@bigpond.com](mailto:suehmiller@bigpond.com)  
[www.fabricgarden.com.au](http://www.fabricgarden.com.au)

**Grieve Family** C/O Maree Gebhardt  
0427 972 708

**Hobbysew** Contact: Mr Chris Castley,  
Tracey Wirihani  
PO Box 4189 02 9831 2111  
Marayong NSW, 2148  
Email: [chris@hobbysew.com](mailto:chris@hobbysew.com)  
[www.hobbysew.com.au](http://www.hobbysew.com.au)

**Karen Kay Buckley (Aus)** Contact: Wendy Whellum  
Distributor for Australia and NZ 0417084245  
PO Box 127  
Daw Park. S A 5041  
Email [Wendy@karenkaybuckleyaustralia.com.au](mailto:Wendy@karenkaybuckleyaustralia.com.au)  
[www.karenkaybuckleyaustralia.com.au](http://www.karenkaybuckleyaustralia.com.au)

**Lynn Hewitt** QuiltNSW  
Contact 0403773949

**Make Modern Magazine** Contact Lara Motta  
17 Adey Road  
Blackwood SA 5051  
Email: [info@makemodern.com.au](mailto:info@makemodern.com.au)  
[www.makemodern.com.au](http://www.makemodern.com.au)

**Maree St Clair Quilts** Contact: Maree St Clair  
0429 393 757  
Email: [maree@mareestclair.com.au](mailto:maree@mareestclair.com.au)  
[www.mareestclairquilts.com.au](http://www.mareestclairquilts.com.au)

**Misty Mountain Getaway** Contact: Chris Timmins  
& Carolyn Hubert  
02 6642 1173  
C/- C Timmins,  
136 Fry Street  
Grafton NSW, 2460  
Email: [christimmins6@bigpond.com](mailto:christimmins6@bigpond.com)  
[www.mistymountaingetaway.com](http://www.mistymountaingetaway.com)

**Misty Threads** Contact: Meg Owen  
02 6657 1200  
40 Hickory St  
Dorrigo NSW, 2453  
Email: [mistythreads@hotmail.com](mailto:mistythreads@hotmail.com)  
[www.mistythreads.com.au](http://www.mistythreads.com.au)

**My Sewing Supplies**

Contact: Ian & Bernadette Hoy  
208 Princes Hwy, 02 9522 2340  
Sylvania NSW 2224  
Email: info@mysewingsupplies.com.au  
[www.mysewingsupplies.com.au](http://www.mysewingsupplies.com.au)

**Patchwork Plus**

Contact: Lorraine Downey  
64A Govetts Leap Rd 02 47875998  
Blackheath NSW 2785  
Email: [patchworkplus@y7mail.com](mailto:patchworkplus@y7mail.com)

**PK Fabrics Pty Ltd**

Contact: Patrick Keogh  
PO Box 89 02 9557 2022  
St Peters NSW, 2044  
Email: skeogh@pkfabrics.com.au  
[www.pkfabrics.com.au](http://www.pkfabrics.com.au)

**Punch With Judy**

Contact: Judy Hall  
Goldenvue, Olympic Way 02 6920 2238  
The Rock NSW, 2655  
Email: judy@punchwithjudy.com.au  
[www.punchwithjudy.com.au](http://www.punchwithjudy.com.au)

**QuiltNSW**

Email: [office@quiltsw.com](mailto:office@quiltsw.com)

**QuiltNSW Members****Quilting Quarters**

Contact Kaye Jamieson 044819739  
Email: kaye@quiltingquarters.com  
[www.quiltingquarters.com.au](http://www.quiltingquarters.com.au)

**Quiltmania**

Contact: Carol Veillon  
La Casteillerie  
44360 Saint Etienne de Montluc France  
Email: carol.veillon@quiltmania.com  
[www.quiltmania.com](http://www.quiltmania.com)

**Sew Can I**

Contact: Karen Stewart 02 9623 4570  
Shop 3/21 Lavin Cres  
Werrington County NSW, 2747  
Email: sewcani@yahoo.com.au  
[www.sewcani.com.au](http://www.sewcani.com.au)

**Sew Fab**

Contact: Leanne 02 6959 9819  
78 East St  
Narrandera NSW, 2700  
Email: leanne@sewfab.com.au  
[www.sewfab.com.au](http://www.sewfab.com.au)

**Stitch**

Contact: Tessa Chaplin 0299586038  
485 Willoughby Road  
Willoughby NSW 2068  
Email: tessa@stitchshop.com.au  
[www.stitchshop.com.au](http://www.stitchshop.com.au)

**Sydney Modern Quilt Guild**

Contact: Anita Brown 0431 506 051  
Email: brownyols@hotmail.com  
[www.sydneymqg.com.au](http://www.sydneymqg.com.au)

**The Appliqué Guild of Australia Inc**

[www.theappliqueguildofaustralia.org.au](http://www.theappliqueguildofaustralia.org.au)

**Wabi-Sabi Designs**

Contact: Shuji Yamazaki 0408 177 344  
PO Box 565  
Dickson ACT, 2602  
Email: wabi-sabidesigns@grapevine.net.au  
[www.wabi-sabi.com.au](http://www.wabi-sabi.com.au)

**XLN Fabrics Pty Ltd**

Contact: Kerrie Rackley 02 9621 3066  
Unit 2, 21 Binney Rd  
Kings Park NSW, 2148  
Email: kerrierackley@xln.com.au  
[www.xln.com.au](http://www.xln.com.au)

Thank you to our sponsors; their generosity and support  
are much appreciated.  
Please support them in return.

**BERNINA**  
*made to create*

# Awards, Categories and Sponsors

## SPECIAL AWARDS

### **BERNINA 'BEST of SHOW'**

BERNINA 720QE sewing machine \$5499  
*Proudly Sponsored by BERNINA Australia Pty Ltd*

### **BERNINA AMATEUR ENCOURAGEMENT AWARD**

BERNINA B325 sewing machine \$1499  
*Proudly Sponsored by BERNINA Australia Pty Ltd*

### **BEST HAND MADE AWARD**

*Sew Can I, Karen Kay Buckley Australia*

### **BERNINA SECONDARY STUDENT AWARD**

Bernette 33 sewing machine \$399  
*Proudly Sponsored by BERNINA Australia Pty Ltd*

### **BEST TRADITIONAL QUILT (Amateur)**

*Cottage Quiltworks, Maree St Clair Quilts*

### **BEST TRADITIONAL QUILT (Professional)**

*Cottage Quiltworks, BeBe Bold*

### **BEST CONTEMPORARY QUILT (Amateur)**

*Lynn Hewitt, Deborah Louie, Misty Mountain Getaway*

### **BEST CONTEMPORARY QUILT (Professional)**

*Sydney Modern Quilt Guild, Misty Mountain Getaway*

### **BEST USE OF COLOUR Quiltmania**

## EXCELLENCE IN QUILTING AWARDS

### **NARELLE GRIEVE HAND QUILTING AWARD (Amateur)**

**The Grieve Family, QuiltNSW Trophy**  
*(Previous recipients are not eligible)*

### **HAND QUILTING AWARD (Open)**

*Stitch, Cottage Quiltworks*

### **STATIONARY MACHINE QUILTING AWARD (Amateur)**

*Quilting Quarters, Hobbysew*

### **STATIONARY MACHINE QUILTING AWARD (Professional)**

*My Sewing Supplies, Sew Fab*

### **MOVEABLE MACHINE QUILTING AWARD (Open)**

*XLN Fabrics, Wabi-Sabi Designs*

## SPONSOR AWARDS

### **BEST USE OF DYES AND PIGMENTS**

*Batik Oetoro*

## AMATEUR CATEGORY AWARDS

### 1. PIECED QUILT

*For predominantly pieced quilts including geometric piecing, improvisational piecing, foundation piecing and English paper piecing.*  
Min size 40 x 40cm / Max size 280 x 280cm

**Quilt NSW Member, Berry Quilt and Co**

### 2. APPLIQUE QUILT

*For predominantly appliqué quilts. (There is no set percentage for appliqué coverage.)*

Min size 40 x 40cm / Max size 280 x 280cm

**The Applique Guild of Australia, Hobbysew**

### 3. COMBINED PIECED & APPLIQUÉ QUILT

*For quilts that are a combination of both appliqué and piecing. Min size 40 x 40cm / Max size 280 x 280cm*

**QuiltNSW Member, Art N Quilting Studio**

### 4. OTHER TECHNIQUES

*For quilts where the main technique is not piecing or appliqué. Includes wholecloth, stencilling, embroidery, crazy quilting, embellishment, painting and fabric manipulation.*

Min size 40 x 40cm / Max size 280 x 280cm

**XLN Fabrics, Art N Quilting**

### 5. ENTRANT'S QUILT TOP QUILTED by ANOTHER

*The entrant's top, quilted by another. The focus is on the quilt top.*

Max size 280 x 280cm

**XLN Fabrics, Art N Quilting Studio**

## PROFESSIONAL CATEGORY AWARDS

### 6. PIECED QUILT

*For predominantly pieced quilts including geometric piecing, improvisational piecing, foundation piecing and English paper piecing.*

Min size 40 x 40cm / Max size 280 x 280cm

**Cottage Quiltworks, Fabric Garden, Hobbysew**

### 7. APPLIQUÉ QUILT

*For predominantly appliqué quilts.*

*(There is no set percentage for appliqué coverage.)*

Min size 40 x 40cm / Max size 280 x 280cm

**The Applique Guild of Australia, Hobbysew**

### 8. COMBINED PIECED & APPLIQUÉ QUILT

*For quilts that are a combination of both appliqué and piecing.*

Min size 40 x 40 cm/Max size 280 x 280 cm

**Patchwork Plus, Quilting Quarters**

### 9. OTHER TECHNIQUES

*For quilts where the main technique is not piecing or appliqué. Includes wholecloth, stencilling, embroidery, crazy quilting, embellishment, painting and fabric manipulation.*

Min size 40 x 40cm / Max size 280 x 280cm

**XLN Fabrics, Misty Threads, QuiltNSW Member**

### 10. ENTRANT'S QUILT TOP QUILTED by ANOTHER

*The entrant's top, quilted by another. The focus is on the quilt top. Max size 280 x 280cm*

**Cottage Quiltworks, Art N Quilting Studio**

## OPEN CATEGORY AWARDS

### 11. MINIATURE

*May be scaled down patterns or your own original design, incl. postcards. Max perimeter 200cm*

**Cottage Quiltworks, QuiltNSW Member**

### 13. ART QUILT

*For abstract or figurative artworks made predominantly of fabric comprised of at least 2 full layers stitched together. Must be the original design of the entrant, not a copy or a variation on the original design of another artist working in any medium. Max size 280cm any one side.*

**QuiltNSW Members, Hobbysew**

### 14. PICTORIAL QUILT

*For quilts depicting a person, place or thing in representational form regardless of design source.*

Max size 280cm any one side.

**Sew Can I, Hobbysew**

### 15. MODERN

*For quilts inspired by modern design. Max size 280 x 280cm*

**Sydney Modern Quilt Guild, Make Modern Magazine**

### 17. GROUP/COLLABORATIVE QUILT

*To be made by three or more people. Includes friendship quilts. At least one person must be a member of QuiltNSW. Groups that hold group membership of QuiltNSW may enter a quilt under the group's name. Max size 280 X 280 cm*

**Cottage Quiltworks, Karen Kay Buckley Australia, Punch with Judy**

## JUNIOR CATEGORY AWARDS

18. JUNIOR MEMBER A (Up to Year 6)  
*Maximum size 280 x 280 cm Free Entry*  
**PK Fabric**

19. JUNIOR MEMBER B (Years 7 - 12, Including Year 12  
Work from 2020)  
*Maximum size 280 x 280 cm Free Entry*  
**PK Fabric**

*All Special Awards and First Prize winners receive an issue of Digital Cloth Magazine*

*Every winning quilt is offered a free appraisal by QuiltNSW*



# Members' Exhibition Quilt Listing

**2. Booth, Donna** Lorn, NSW  
Magnolia x Soulangiana Heralds Spring 90 x 90cm  
**Art Quilt**

In late winter the magnolia is a mass of purple pink flowers, but over a week the petals fall, revealing emerging leaves, effectively going green and heralding spring.

**3. Grove, Stephanie** Townsville, QLD  
Field of Flannel 83 x 131cm  
**Other Techniques - Professional**

A pieced background with a hint of paint provides the textured backdrop for the wired and freestanding flannel flowers. These designs form part of a computerised machine embroidery collection, created and digitised by the quiltmaker.

**4. West, Laura-Mae** Willow Tree, NSW  
Magic Connection 90 x 90cm  
**Pictorial Quilt**

My inspiration came from our horses and our connection with them. Foundation paper pieced horse, machine quilted on my Bernina 535, quilted names of our show horses, backing is pieced ribbons I won on my good mare Ego, beaded eye and rosettes and tassels off my champion ribbons.

**5. Leath, Jocelyne** Aveyley, WA  
In the Moment 90 x 73cm  
**Art Quilt**

Lost in the moment, the universal language of love and passion, coffee and music. Shared and enjoyed by any age, culture or nation. Transition from a cup of coffee to a work of art.

**6. Docksey, Judy** Armidale, NSW  
Optimism 84 x 152cm  
**Art Quilt**

2019/2020 has been a stressful time in my life. My quilt represents all of the 'viral' thoughts that result from these stresses. They have been minimised and stored away so that the optimistic thoughts can rise and fly freely.

**7. Nikoleski, Judi** Chartlestown, NSW  
Cosmic Soup 90 x 90cm  
**Art Quilt**

The chemical soup of the cosmos is transformed into all elements by gravity - a wondrous and timeless process. Printed and dye painted wholecloth background, mono printed raw edge appliqué with trapunto, free machine quilted, fabric paint highlights.

**9. Badovinatz, Denise** Ashbury, NSW  
Denise's My Small World 90 x 140cm  
**Combined Pieced & Appliqué Quilt - Amateur**

I have used Jen Kingwell's pattern to create a quilt that reflects my life journey during the 15 years I lived in Portland, Oregon USA. I used embroidery, commercial patches and adapted the pattern to reflect my own small world view.

Design Source: My Small World by Jen Kingwell

**10. Sharkey, Caroline** Urunga, NSW  
ReGrowth 92 x 90cm  
**Other Techniques - Professional**

After the Fire comes the ReGrowth. I used patterns from indigenous fabric designs to depict bush flowers and seeds regenerating after the fires, to symbolise the use of traditional Aboriginal fire management to promote biodiversity.

**11. Albury, Rebecca** Bulli, NSW  
Baskets at Bwindi 92 x 92cm  
**Pieced Quilt - Amateur**

Honouring 'Ride 4 A Woman', a non-profit supporting basket makers, sewers and singers. Located at the edge of Bwindi Impenetrable Forest National Park and its gorillas and birds. All African fabric, most bought at Ride 4 A Woman.

Design Source: A View from the Edge by Kaye England

**12. Pousderkos, Trisha** Flinders, NSW  
Ghosts of the Highlands 92 x 118cm  
**Combined Pieced & Appliqué Quilt - Amateur**

Dark grey and light greys with appliqué picture of hut and gumtrees.

**13. Davies, Petal** Faulconbridge, NSW  
The Cave 96 x 99cm  
**Art Quilt**

This quilt originated from the hand dyed fabric which is machine embroidered with The Cave appliqué in the centre. The embroidery includes machine stitches, free motion, bobbin work and substrate soluble fabric work.

**14. Rona, Judith** Bondi, NSW  
Rolling Mountains 45 x 42cm  
**Other Techniques - Amateur**

Waratahs, wattles, banksias - the Blue Mountains always put on a show. This piece was started while on holiday in Katoomba, NSW. One random line of embroidery, echoed, mirrored and filled, grew by itself.

**15. Chapman, Jennifer** Upper Lansdowne, NSW  
Hairdresser Day, Permed and Coloured 46 x 43cm  
**Other Techniques - Amateur**

A day at the Hairdressers was the inspiration to finish this almost perfectly groomed colourful lady. It was a challenge to quilt the background without overpowering the feature. Completed in January 2021 and love her.

Design Source:Workshop with Helen Rhodes at Love Patchwork, Harrington

**16. Porter, Catherine** Bexley, NSW  
Ebb and Flow 25 x 33cm  
**Miniature**

Original design. Wholecloth, machine quilted then coloured. This continues my optical art experiments. Just how small a space can I go? An image magically appeared so I went with the flow to develop it. Do you see a duck, phoenix or something else?

**18. Cardie, Jan** Camden South, NSW  
Straight Furrows 28 x 23cm  
**Miniature**

I love using 30's fabrics and also making miniature quilts.

**19. Gibson, Jane** Epping, NSW  
In Search of the Alphabet 32 x 27cm  
**Miniature**

To have the Disappearing Nine Patch work at this scale it was necessary to distort the original Nine Patch block. After that it was all plain sailing and I could just enjoy the search for images. There is something for every letter of the alphabet.

**20. Aubrun, Suzanne** Haymarket, NSW  
Bubbles 50 x 65cm  
**Other Techniques - Amateur**

Improvisations on a semi failed dyeing attempt to achieve a grid pattern with folded fabric. The free motion quilting grew as I went along with bubbles trying to escape, some of them getting red with frustration.

**21. Noonan, Prunella** Avalon, NSW  
15th Tee - Bambougle Dunes 52 x 78cm  
**Pictorial Quilt**

One of the most picturesque golf tees anywhere, standing on the 15th tee at Bambougle Dunes in Tasmania.

**22. Breeze, Jennie** Jamberoo, NSW  
Ball Time 71 x 81cm  
**Other Techniques - Amateur**

The quilt depicts my dog, Miss Maxie anxiously waiting for me to throw her ball...now please! I commenced the quilt at a 2019 AQC 4-day Susan Carlson 'Fabric Collage' class using my own photo.

**23. Harradine, Colleen** Collombatti Rail, NSW  
'W' is for Wolf 75 x 75cm  
**Pictorial Quilt**

On a trip to Canada a few years ago, we were impressed by the wildlife. We met some wolves in a reserve and had a memorable howling session with them. This quilt reminds me of the beautiful mountains around Banff and my 'howling' daughter, Angharad.

Design Source:Based on Winter Wolf by Toni Whitney

**24. Harding, Julie** Toormina, NSW  
Hay Fever 83 x 58cm  
**Art Quilt**

Improvisational quilt inspired from an original block print. Earthy colours relate to a dry Aussie bush with pollen, seeds and a splash of colour for water. Embroidered circles help to illustrate floating pollen and give cohesion.

**25. Sullivan, Carolyn** Bundanoon, NSW  
Exploration 76 x 99cm  
**Other Techniques - Professional**

Exploring stitch, exploring the wildflowers of Central Australia.

**26. Russell, Pam** Concord West, NSW  
Fiddlesticks 77 x 77cm  
**Modern**

After attending a miniature workshop with Jane Gibson I was drawn to try inserting some narrow strips into backgrounds. Turns out this was nothing new but it was new to me. Kathleen Loomis is the queen of this technique.

**27. Day, Judy** Lindfield, NSW  
Hickory Leaf and Reel 80 x 80cm  
**Appliqué Quilt - Professional**

Using my favourite green Liberty Lawns I hand appliquéd 32 Hickory Leaf and Reel blocks, a popular design of the late 19th century. They surround a medallion block of my own design.

Design Source:Hickory Leaf and Reel is a traditional block from the 1800s.

**28. Browne, Jan** Illawong, NSW  
On Betka Beach 64 x 43cm  
**Art Quilt**

This is a whimsical conglomeration of various sea creatures seen on my regular meanderings along Betka Beach, Mallacoota (made prior to the recent bushfire).

**29. Dennis, Sue** Sunnybank, QLD  
Mediterraneo- Buongiorno 82 x 86cm  
**Art Quilt**

In old Italian villages bright sunlit piazzas contrast sharply with mysterious dark alleyways. The ebb and flow of life is conducted in both locations. Techniques: hand painted, machine pieced, machine quilted.

# Members' Exhibition Quilt Listing

**2. Booth, Donna** Lorn, NSW  
Magnolia x Soulangiana Heralds Spring 90 x 90cm  
**Art Quilt**

In late winter the magnolia is a mass of purple pink flowers, but over a week the petals fall, revealing emerging leaves, effectively going green and heralding spring.

**3. Grove, Stephanie** Townsville, QLD  
Field of Flannel 83 x 131cm  
**Other Techniques - Professional**

A pieced background with a hint of paint provides the textured backdrop for the wired and freestanding flannel flowers. These designs form part of a computerised machine embroidery collection, created and digitised by the quiltmaker.

**4. West, Laura-Mae** Willow Tree, NSW  
Magic Connection 90 x 90cm  
**Pictorial Quilt**

My inspiration came from our horses and our connection with them. Foundation paper pieced horse, machine quilted on my Bernina 535, quilted names of our show horses, backing is pieced ribbons I won on my good mare Ego, beaded eye and rosettes and tassels off my champion ribbons.

**5. Leath, Jocelyne** Aveyley, WA  
In the Moment 90 x 73cm  
**Art Quilt**

Lost in the moment, the universal language of love and passion, coffee and music. Shared and enjoyed by any age, culture or nation. Transition from a cup of coffee to a work of art.

**6. Docksey, Judy** Armidale, NSW  
Optimism 84 x 152cm  
**Art Quilt**

2019/2020 has been a stressful time in my life. My quilt represents all of the 'viral' thoughts that result from these stresses. They have been minimised and stored away so that the optimistic thoughts can rise and fly freely.

**7. Nikoleski, Judi** Chartlestown, NSW  
Cosmic Soup 90 x 90cm  
**Art Quilt**

The chemical soup of the cosmos is transformed into all elements by gravity - a wondrous and timeless process. Printed and dye painted wholecloth background, mono printed raw edge appliqué with trapunto, free machine quilted, fabric paint highlights.

**9. Badovinatz, Denise** Ashbury, NSW  
Denise's My Small World 90 x 140cm  
**Combined Pieced & Appliqué Quilt - Amateur**

I have used Jen Kingwell's pattern to create a quilt that reflects my life journey during the 15 years I lived in Portland, Oregon USA. I used embroidery, commercial patches and adapted the pattern to reflect my own small world view.

Design Source: My Small World by Jen Kingwell

**10. Sharkey, Caroline** Urunga, NSW  
ReGrowth 92 x 90cm  
**Other Techniques - Professional**

After the Fire comes the ReGrowth. I used patterns from indigenous fabric designs to depict bush flowers and seeds regenerating after the fires, to symbolise the use of traditional Aboriginal fire management to promote biodiversity.

**11. Albury, Rebecca** Bulli, NSW  
Baskets at Bwindi 92 x 92cm  
**Pieced Quilt - Amateur**

Honouring 'Ride 4 A Woman', a non-profit supporting basket makers, sewers and singers. Located at the edge of Bwindi Impenetrable Forest National Park and its gorillas and birds. All African fabric, most bought at Ride 4 A Woman.

Design Source: A View from the Edge by Kaye England

**12. Pousderkos, Trisha** Flinders, NSW  
Ghosts of the Highlands 92 x 118cm  
**Combined Pieced & Appliqué Quilt - Amateur**

Dark grey and light greys with appliqué picture of hut and gumtrees.

**13. Davies, Petal** Faulconbridge, NSW  
The Cave 96 x 99cm  
**Art Quilt**

This quilt originated from the hand dyed fabric which is machine embroidered with The Cave appliqué in the centre. The embroidery includes machine stitches, free motion, bobbin work and substrate soluble fabric work.

**14. Rona, Judith** Bondi, NSW  
Rolling Mountains 45 x 42cm  
**Other Techniques - Amateur**

Waratahs, wattles, banksias - the Blue Mountains always put on a show. This piece was started while on holiday in Katoomba, NSW. One random line of embroidery, echoed, mirrored and filled, grew by itself.

**15. Chapman, Jennifer** Upper Lansdowne, NSW  
Hairdresser Day, Permed and Coloured 46 x 43cm  
**Other Techniques - Amateur**

A day at the Hairdressers was the inspiration to finish this almost perfectly groomed colourful lady. It was a challenge to quilt the background without overpowering the feature. Completed in January 2021 and love her.

Design Source:Workshop with Helen Rhodes at Love Patchwork, Harrington

**16. Porter, Catherine** Bexley, NSW  
Ebb and Flow 25 x 33cm  
**Miniature**

Original design. Wholecloth, machine quilted then coloured. This continues my optical art experiments. Just how small a space can I go? An image magically appeared so I went with the flow to develop it. Do you see a duck, phoenix or something else?

**18. Cardie, Jan** Camden South, NSW  
Straight Furrows 28 x 23cm  
**Miniature**

I love using 30's fabrics and also making miniature quilts.

**19. Gibson, Jane** Epping, NSW  
In Search of the Alphabet 32 x 27cm  
**Miniature**

To have the Disappearing Nine Patch work at this scale it was necessary to distort the original Nine Patch block. After that it was all plain sailing and I could just enjoy the search for images. There is something for every letter of the alphabet.

**20. Aubrun, Suzanne** Haymarket, NSW  
Bubbles 50 x 65cm  
**Other Techniques - Amateur**

Improvisations on a semi failed dyeing attempt to achieve a grid pattern with folded fabric. The free motion quilting grew as I went along with bubbles trying to escape, some of them getting red with frustration.

**21. Noonan, Prunella** Avalon, NSW  
15th Tee - Bambougle Dunes 52 x 78cm  
**Pictorial Quilt**

One of the most picturesque golf tees anywhere, standing on the 15th tee at Bambougle Dunes in Tasmania.

**22. Breeze, Jennie** Jamberoo, NSW  
Ball Time 71 x 81cm  
**Other Techniques - Amateur**

The quilt depicts my dog, Miss Maxie anxiously waiting for me to throw her ball...now please! I commenced the quilt at a 2019 AQC 4-day Susan Carlson 'Fabric Collage' class using my own photo.

**23. Harradine, Colleen** Collombatti Rail, NSW  
'W' is for Wolf 75 x 75cm  
**Pictorial Quilt**

On a trip to Canada a few years ago, we were impressed by the wildlife. We met some wolves in a reserve and had a memorable howling session with them. This quilt reminds me of the beautiful mountains around Banff and my 'howling' daughter, Angharad.

Design Source:Based on Winter Wolf by Toni Whitney

**24. Harding, Julie** Toormina, NSW  
Hay Fever 83 x 58cm  
**Art Quilt**

Improvisational quilt inspired from an original block print. Earthy colours relate to a dry Aussie bush with pollen, seeds and a splash of colour for water. Embroidered circles help to illustrate floating pollen and give cohesion.

**25. Sullivan, Carolyn** Bundanoon, NSW  
Exploration 76 x 99cm  
**Other Techniques - Professional**

Exploring stitch, exploring the wildflowers of Central Australia.

**26. Russell, Pam** Concord West, NSW  
Fiddlesticks 77 x 77cm  
**Modern**

After attending a miniature workshop with Jane Gibson I was drawn to try inserting some narrow strips into backgrounds. Turns out this was nothing new but it was new to me. Kathleen Loomis is the queen of this technique.

**27. Day, Judy** Lindfield, NSW  
Hickory Leaf and Reel 80 x 80cm  
**Appliqué Quilt - Professional**

Using my favourite green Liberty Lawns I hand appliquéd 32 Hickory Leaf and Reel blocks, a popular design of the late 19th century. They surround a medallion block of my own design.

Design Source:Hickory Leaf and Reel is a traditional block from the 1800s.

**28. Browne, Jan** Illawong, NSW  
On Betka Beach 64 x 43cm  
**Art Quilt**

This is a whimsical conglomeration of various sea creatures seen on my regular meanderings along Betka Beach, Mallacoota (made prior to the recent bushfire).

**29. Dennis, Sue** Sunnybank, QLD  
Mediterraneo- Buongiorno 82 x 86cm  
**Art Quilt**

In old Italian villages bright sunlit piazzas contrast sharply with mysterious dark alleyways. The ebb and flow of life is conducted in both locations. Techniques: hand painted, machine pieced, machine quilted.

**30. Hogg, Judy** Miranda, NSW  
Wild Spirited Wolf 87 x 75cm

**Appliqué Quilt - Amateur**

It was fun choosing different coloured fabrics and fancy stitches for this Sew Quirky designed little guy.

Design Source: Wild Spirit Wolf by Mandy Murrall, Sew Quirky

**31. Hall, Alvena** Grange, SA  
Urban Leaf-fall 67 x 117cm

**Other Techniques - Professional**

We'd felled a huge Eucalyptus maculata, as it was too close to our house: this quilt is its memorial. Sadly, too many mature trees fall, as suburban 'in-fill' permits up to three units to replace one old house, with simply no room left for trees.

**32. Ritson, Kerry** Avalon Beach, NSW  
Five Top Performers 88 x 88cm

**Pieced Quilt - Amateur**

This quilt was inspired by the digital fabric purchased from Equilter. I love fussy cutting, machine piecing and using my machine to quilt simple patterns using stencils.

**33. Moules, Roslyn** Bangor, NSW  
New Growth from Forest Floor 76 x 55cm

**Art Quilt**

The drought and bush fires have had a tremendous impact on Eastern Australia. The forests struggle too. Shed leaves, bark, seeds, branches, stems and insects fall to the forest floor. Regrowth depends on the eco system's ability to adapt.

**34. Betts, Belinda** Orange, NSW  
Gold-Au-79 89 x 94cm

**Art Quilt**

Representational of a gold seam - I used many different fabrics to try and give the idea of gold in the ground. Of course gold doesn't glow like this prior to mining, but in my imagination it did.

**35. Griffiths, Denise** Shellharbour, NSW  
Roosterfish in the Sea of Cortez 102 x 132cm

**Pictorial Quilt**

The quilt is a picture of the magnificent and unusual roosterfish of the Sea of Cortez. Appropriately named for its rooster comb-like fin.

**36. Boland, Donna** Yowie Bay, NSW  
The Tip Shop 103 x 103cm

**Other Techniques- Amateur**

Simplistic in design to focus attention on my hand dyed rust fabric. The local tip shop was the source of the rusty items used to create the unique fabrics. One man's junk is a rust dyer's treasure! Look closely. What can you see in the rust patterns?

**37. Kennedy, Julie** Davidson, NSW  
Georgie 104 x 104cm

**Pictorial Quilt**

Jo Dixey is a spectacular classically trained embroiderer, I enjoyed a fantastic workshop with her a few years ago. Jo showed us how to transfer a photo into a quilt. This is my beautiful youngest daughter....Gee thinks she looks like Barack Obama.

Design Source: Workshop by Jo Dixey

**38. Tramontana, Di** Picton, NSW  
Staying Connected 105 x 105cm

**Combined Pieced & Appliqué Quilt - Professional**

This quilt was created in direct response to the Covid crisis & the need for myself & my students to stay connected. It was a way to reach out to them during lockdown giving us all a way to process our isolation & the new ways of staying in contact.

**39. Magnay, Susan** Batehaven, NSW  
Fire Malua Bay 105 x 132cm

**Pieced Quilt - Amateur**

A response to the Currowan bushfire that swept through our area on 31/12/2019. The quilt started with fabric scraps, needle, thread and scissors retrieved from our damaged home after the fire. String pieced by hand, machine and hand quilted.

**41. Beer, Sheila** Matraville, NSW  
Side to Side 110 x 78cm

**Modern**

The joy of playing with shape. Based on a collage created with offcuts from another project which in turn was created from paper created in a gelatine plate printing session. Art creates more art.

**42. Daly, Amanda** Kenthurst, NSW  
Gum Nuts 109 x 109cm

**Appliqué Quilt - Professional**

My machine, raw edge appliqué technique with very neat edges, defined with metallic thread is the technique I'm best known for. Eye problems make this my last quilt using this technique. Pieced a couple of years ago, quilted during Covid lockdown.

**43. Kondratenko, Christine** Sandringham, NSW  
The Green Men 110 x 220cm

**Group/Collaborative Quilt**

The Green Man, a nature spirit whose face is sometimes hidden in plain sight. Individual panels made by Chris Kondratenko, Jan Browne, Denise Sargo, Kerry Stern, Sandra Lyons & Robyn Eves using different techniques to create a cohesive whole.

**44. Sadleir, Gail** Engadine, NSW  
Emerging 113 x 83cm  
**Art Quilt**

'Emerging' is my version of a shattered glass quilt. It celebrates a renaissance in the world of flora. I have used a variety of silk, bias tape and some bleach dyeing to create a Chiaroscuro effect.

**45. Lemin, Brian** Cooranbong, NSW  
Rectangles 84 x 54cm  
**Other Techniques - Amateur**

It is an exercise in trying to fill each rectangle with 'nothing of a particular meaning'. This was a technique I read that was often used by Kandinsky (1866 1944). He was an abstract artist and a talented musician. The rectangles are applied using black tape after the quilt was 'finished'. As there is disregard for the designs, the rectangles sometimes overlap.

**46. Walton, Lisa** Lewisham, NSW  
Down the Street 100 x 100cm  
**Art Quilt**

It has been estimated that domestic violence has increased by over 35% during Covid 19 & the lockdowns created to try and restrict the spread of the virus. Imagine the spiralling terror of being trapped in isolation with your abuser.

**47. Sargo, Denise** South Hurstville, NSW  
Sunset on the Zambezi 96 x 67cm  
**Pictorial Quilt**

Created from a sketch I did on holiday in Zambia. Raw edge appliqué, hand embroidered, ink intense pencils, machine quilted and pieced.

**48. Layt, Deb** Watsonia North, VIC  
Oscar's Cubes of Colour 93 x 115cm  
**Art Quilt**

After seeing Escher's Exhibition in Melbourne I was inspired to create my own illusionary piece and chose the impossible triangle. What ensued was a complicated exercise with baby blocks, a colour wheel and my geoweb of stars.

Design Source:Based on the Impossible Triangle by Oscar Reutersvard, 1934

**50. Allen, Stephanie** Mirani, QLD  
We Remember Them 99 x 105cm  
**Pictorial Quilt**

'We Remember Them' is my interpretation of being thankful for what our current & past veterans have sacrificed for our worldly freedom. I have used a mix of wool, fibres, fabrics and thread to create this piece.

**51. Parker, Lorraine** Booragul, NSW  
Wangi, Place of Water 99 x 105cm  
**Combined Pieced & Appliqué Quilt - Professional**

Wangi on Lake Macquarie is a place of water. One image alone could not capture the history, culture, nature and architecture of this unique magical place with its changing light. The mathematical combination into a balanced whole was the challenge.

**52. Leitch, Carol** Umina Beach, NSW  
3 Mothers 100 x 60cm  
**Other Techniques - Amateur**

The tale of 3 mothers, birth, adoptive and step. Each mother passed the child along to the next until the child is finally discarded. None wanting the burden of the child. Red circle depicting the child's pain of going unloved.

**53. Brown, Anna** Bungwahl, NSW  
FLORA Canopy 14 99 x 133cm  
**Art Quilt**

This quilt evokes a feeling of calm, as dappled light flickers through the canopy of a forest.

**55. Williams, Yvonne** Murrumbateman, NSW  
Waiting for the Next Event 100 x 130cm  
**Pictorial Quilt**

Inspiration for the quilt was by combining 2 photos I had taken at a Pony Club event. I found the design process and quiltmaking far more difficult than originally anticipated and very challenging. Cotton fabric, raw edge appliqué, machine quilted.

**56. Law, Michelle** Downer, ACT  
Dis/order 101 x 101cm  
**Modern**

In the midst of a disordered 2020, I lost my enthusiasm for quilting. An online class with Carole Lyles Shaw in September 2020 reignited the spark. The centre blocks were made during the class. The setting and borders were me seeking order in chaos.

Design Source:Parisian Curves Class by Carole Lyles Shaw

**57. Tait, Helen** Northbridge, NSW  
Moonstone In Colour 102 x 102cm  
**Modern**

After many years of making quilts this is my first hand made English paper piecing project. I have enjoyed the peace of being away from my sewing machine and working with octagons rather than squares and rectangles.

Design Source:Moonstone by Guicy Guicy

**58. Nicholls, Margaret** Callala Beach, NSW  
Leftovers 128 x 98cm  
**Modern**

I had a stack of colourful 'leftovers' from a previous project. I thought I could make an interesting quilt if I combined them with my stash of dark greys and blacks. It was a bit of a jigsaw but I enjoyed the process and I'm happy with the result.

**59. Kennewell, Ingrid** Fennell Bay, NSW  
Around the Town 122 x 122cm  
**Combined Pieced & Appliqué Quilt - Amateur**

A bright and fun floor quilt for a child to enjoy. I have used lots of bright colours along with foundation piecing, machine and hand appliqué. My adaptation of 'Full Circle Quilt' by Wendy Williams.

Design Source: Full Circle by Wendy Williams

**60. Hooworth, Judy** Morisset, NSW  
Creek Drawing #14 125 x 168cm  
**Other Techniques - Professional**

Discharged commercial cottons, deconstructed screened mono prints, drawing, machine quilted.

**61. Haron, Nicky** Pimpama, QLD  
Thoroughly Modern Doily 127 x 105cm  
**Modern**

I wanted to make a modern quilt using recycled embroidered doilies, to show that these beautiful textiles from a previous era can be successfully incorporated into a contemporary quilt that would look good in a modern setting.

Design Source: Based on Towards The Sun by Robin Pickens

**62. Rogerson, Sue** Mosman, NSW  
Ira's Baltimore 127 x 126cm  
**Appliqué Quilt - Amateur**

A small Baltimore dedicated to my friend and teacher Ira Joseph (1954-2016) of Quilts 'n Calicoes, Singapore. Commenced under Ira's guidance in 2004, the blocks lay abandoned until finally finished for a UFO challenge in 2018. Hand quilted 2019.

Design Source: Blocks based on patterns by Elly Sienkiewicz

**63. Mackley, Cynthia** Tumby Umbi, NSW  
Spinning Wheels 127 x 126cm  
**Entrant's Quilt Top, Quilted by Another - Amateur**

English paper piecing done in bright fabrics with yo-yo's for centres and fussy cut black blocks. This was a challenge for me as I haven't done much hand sewing before this.

Design Source: Sliced Octagon by Rachael Porter

*Machine Quilted by: Di Holmes, J&D Quilting*

**64. Markham, Alison** Figtree, NSW  
Burnt Stars 142 x 123cm  
**Pieced Quilt - Amateur**

Burnt orange & black stars represent the land post the 2019-2020 bushfires. The victims are in a mire of the beige background oblivion. The tight waves and bubble quilting shows our lack of water. Great workshop with Meredith just before lockdown.

Design Source: Hunter's Star workshop by Meredith Budd, Dragon Quilt Services

**65. Kanitkar, Pradnya** Panania, NSW  
Colours Pop 146 x 122cm  
**Appliqué Quilt - Amateur**

Love for the paisley shape and all the rainbow colours inspired me to create this unique design. When the rainbow colours are together they show the harmony within.

**66. Grace, Pauline** Bradbury, NSW  
Not Any Old Lace 105 x 48cm  
**Other Techniques - Professional**

An inherited piece of Battenberg lace, skillfully worked, links us through the years to the newest lace maker in modern design, with a manipulated piece from Vicki Davenport & her bird Coco.

**67. Alexander, Shelia** Cronulla, NSW  
Shimmering Blooms 111 x 109cm  
**Entrant's Quilt Top, Quilted by Another - Amateur**

Starting with four identical fabric squares, the 'fracture' of fabric method creates a distortion of the original fabric that can be a bit dizzying as well as pleasing look.

Design Source: Fracture Frenzy by Brenda Esslinger

*Machine Quilted by: Kaye Jamieson, Quilting Quarters*

**68. Pearce, Merelyn** Gerroa, NSW  
Nouveau en Bleu et Blanc 112 x 112cm  
**Appliqué Quilt - Professional**

This quilt is a combination of Art Nouveau style blocks with 1960's dress trim. Hand appliquéd, embroidered and beaded.

Design Source: 300 Art Nouveau Designs and Motifs by Carol Belanger Grafton, Dover Pictorial Archive Series

**69. Nutt, Wendy** Lemon Tree Passage, NSW  
Come In Spinner 118 x 118cm  
**Modern**

Inspired by a photo taken at Dorrigo National Park. Constructed using a log cabin, each consecutive round has torn WOF strips manipulated to imply spun spider silk. As the rounds expanded, the 'silk' widths increased to create the spider funnel.

**70. de Vanny, Sue** Greenvale, VIC  
Kiribu Binti Mflame (Princess) 118 x 187cm  
**Pictorial Quilt**

I have created a piece from a photo I took on a safari holiday in Kenya, 2016. Whilst exploring and wanting to do something a little different, I eventually decided on the modern look of polygons and to represent the mode.

**71. Bacon, Jenny** Maryborough, VIC  
Celebrating Spring Down Under 119 x 114cm  
**Combined Pieced & Appliqué Quilt - Professional**

In the forests surrounding my home, the Golden Wattle blooms in August and we know that spring is coming!

**72. Delandro, Jenny** Cherrybrook, NSW  
George's Quilt 120 x 70cm  
**Pieced Quilt - Amateur**

This quilt has 7 squares representing George's family. Dragonflies for his mum & blue for his dad. Pink for his sister, blue stripes & rainbows for his brothers, grey & white for his angel sister and coloured circles for George indicating fun.

**73. Thorncraft, Kathy** North Strathfield, NSW  
Structure in Chaos 120 x 120cm  
**Pieced Quilt - Amateur**

This is my 2020 quilt - chaos but finding pockets of structure, refinding ways, creating new paths and learning to be more humble. New patterns start to emerge from simple blocks and life then becomes the new normal.

**74. Smith, Brenda Gael** Copacabana, NSW  
Landlines: Canola Country 122 x 102cm  
**Art Quilt**

How uplifting to drive through canola country with vistas of yellow crowned by a wide, open sky at every crest and turn. My attempt to take photos while the car was in motion resulted in a vivid blur punctuated by fences.

**75. Shipton, Robyn** Church Point, NSW  
Shibori Boro Happen 127 x 127cm  
**Other Techniques - Amateur**

Six squares of light grey linen dyed during a workshop Shibori with Cath from @thehappenstore were cut up & rearranged for a quilt-as-you-go travel project. Boro style quilting alternated 5 rows of neutral Perle 12 with 5 rows of 'something' else.

**76. Jobbins, Di** Zetland, NSW  
Pandemic Pyramids 135 x 130cm  
**Pieced Quilt - Amateur**

These 1579 triangles have travelled thousands of kms with me over the past 5 years, a welcome handwork project. Quilting my favourite bright solids and Liberty prints proved especially comforting through the challenging Covid-19 restrictions.

Design Source:From the pattern Panama Pyramids by Linda Collins

**77. Teager, Maureen** St Huberts Island, NSW  
Pac Man Returns 130 x 130cm  
**Modern**

Modern interpretation of Drunkards Path block. Pattern in Quiltcon 2019 magazine.

Design Source:Circling the Square by Anne Deister

**78. Roberts, Marianne** Westleigh, NSW  
Dandelions and Sunshine 143 x 143cm  
**Pieced Quilt - Professional**

The Covid lockdown was a great opportunity to enjoy quilting pursuits for hours on end. I was compelled by the dandelion print to create a cheerful quilt, then rediscovered the joys of free-motion machine quilting. Bliss! It's an ill wind...

**79. Jamieson, Kaye** Bonnet Bay, NSW  
All Tied Up 146 x 146cm  
**Pieced Quilt - Professional**

A simple block, the Bowtie block reimagined in a monochrome pallet, with a modern look.

Design Source:Methodist Hill Quilt Studio

**80. Scobie, Julie** Mosman, NSW  
A Connection to Everything 132 x 162cm  
**Art Quilt**

The tree of life represents the interconnectiveness of everything in the universe. I've stitched the tree onto a background of recycled fabrics and embroideries collected over the years.

**81. Lyons, Sandra** Oyster Bay, NSW  
My Japanese Wishes 145 x 176cm  
**Pieced Quilt - Amateur**

Loosely based on a traditional Chinese quilt design '100 Good Wishes' (Bai Jai Bei), which I expanded from the original 100 squares. Made using my Japanese silk scraps with a few pieces too nice to cut up. Machine pieced. Hand and machine quilted.

Design Source:Workshop 100 Good Wishes by Diana Marshall, Oatley Quilt Sisters

**82. Austin, Chris** Lane Cove, NSW  
New Shoots/Rahui 147 x 146cm  
**Appliqué Quilt - Amateur**

In 2020 horrific bush fires burnt up & down the east coast burning many thousands of hectares, devastating many communities and killing millions of our lovely native wildlife. But it doesn't take long for the bush to regenerate & show 'New Shoots'. This block was designed for the Wollongong MQC bushfire charity quilts.

Design Source:Block designed by Lorena Uriarte for the Wollongong MQC bushfire charity quilts.



**83. James, Robert (Bob)** Woollooware, NSW  
100 to 01 145 x 145cm  
**Modern**

100 15cm fully quilted blocks, whipped together to make a Modern quilt, made with scraps on an indigo linen background.

**84. Langley, Ann** Wentworth Falls, NSW  
Out of the Blue 134 x 134cm  
**Pieced Quilt - Professional**

The Corona Virus (orange) came out of the blue, constantly changing and evolving. The Virus spread all over the world but gradually man is taking control and sending it back into the blue, or are we?

Design Source: Farmers Daughter block from The Quilters Album of Blocks and Borders by Jinny Beyer

**85. Hurter, Rosemary** St Ives, NSW  
Joli Jardin 136 x 127cm  
**Combined Pieced & Appliqué Quilt - Amateur**

I enjoy hand sewing, particularly appliqué. The only machining on this quilt was to attach the binding. Hand quilting was my favourite part of the process.

Design Source: Inspired by Brigitte Giblin designs

**86. Keogh, Lyn** Malua Bay, NSW  
Antique French Lace 128 x 128cm  
**Appliqué Quilt - Professional**

The soft hues of French cottons and chambrays create a floral border around a linen centre, reminiscent of an antique French Lace handkerchief. The design was inspired by a lace handkerchief from 1875-1889.

**87. Nicholls-Thomson, Sharon** Far Meadow, NSW  
Drunkard's Shores 147 x 142cm  
**Art Quilt**

This is an abstract composition referencing Drunkard's Path blocks. The shapes hinting at hills, shores, sails & island isolation. Also, I limited my colour palette & challenged myself to combine 'vintage' prints, 'modern' solids & textured weaves.

**88. Sparkles, Molli** Waterloo, NSW  
Shimmer City Sampler 153 x 153cm  
**Entrant's Top Quilted by Another - Professional**

With a name like Molli Sparkles, I try to ensure each quilt does just that: sparkle! This is my take on the popular 'City Sampler' pattern by Tula Pink. I intentionally pieced and assembled the 100, 6" blocks to create a luxurious, metallic colourwash.

Design Source: City Sampler: 100 Modern Quilt Blocks by Tula Pink

*Machine Quilted by: Leanne Harvey, Mount Vincent Quilts*

**89. Groves, Diane** Stanmore, NSW  
Kingswinford 144 x 155cm  
**Combined Pieced & Appliqué Quilt - Amateur**

Kingswinford is where I grew up. Dating from Roman times, it has an eclectic mix of architecture, like this design. I have modified the central block to include the medieval strip farming of the area and the much-loved duck pond of my home town.

Design Source: Based on Quilted Village by Janet Miller

**90. Aitken, Liz** Bonnet Bay, NSW  
Around the Garden Path 156 x 156cm  
**Pieced Quilt - Amateur**

This quilt uses bright garden inspired fabrics for the flower bed and the path has been heavily quilted with pebbles. I used a mini quick curved ruler by Sew Kind of Wonderful and book, 'Mini Wonderful Curves' for inspiration.

**92. Iwanczuk, Maralyn** Concord West, NSW  
O.M.G. My Diamond has Faults!!! 157 x 158cm  
**Other Techniques - Professional**

The facet panel was purchased in America. I have double quilted the facet's pieces and embellished the rest of the quilt to represent diamonds and all that sparkle. But not all diamonds are faultless, a few have small faults.

**93. Webeck, Anne** Gloucester, NSW  
Australian Wildflowers 136 x 136cm  
**Other Techniques - Amateur**

I created this quilt myself using burgundy & golden coloured fabric. On each of the 12 blocks I machine embroidered Australian native flowers in a candle wicking method on the darkest fabric with a gold silk thread. I am proud of this quilt.

Design Source: Embroidery designed by Dawn Johnson Designs

**94. Middleton, Heather** GyMEA, NSW  
My Lockdown Dress 176 x 125cm  
**Appliqué Quilt - Amateur**

Petals in skirt and scallop edging machine sewn and turned through. Other needle turned and hand appliquéd and hand quilted. My mum would turn in her grave if I had Laura's raw edges, but I will next time.

Design Source: The Dress by Laura Heine

**95. Frazer, Jan** Elwood, VIC  
Nirvana Nouveau 167 x 126cm  
**Appliqué Quilt - Professional**

Ogee shape inspired by a rug in the Victoria & Albert Museum. Some design elements from 'Art Nouveau' by Polly Pinder (Dover Publications), old fabric samples and art nouveau shapes.

Design Source: Some design elements from Art Nouveau by Polly Pinder (Dover Publications)

**96. Cheng, Selina** Thornleigh, NSW  
Interconnected 160 x 130cm  
**Pieced Quilt - Amateur**

Interaction with others both changes us and changes those we interact with.

**98. Saunders, Rebecca** Sapphire Beach, NSW  
Sunflowers 175 x 137cm  
**Entrant's Quilt Top, Quilted by Another - Amateur**

Inspired by 'Garden Party' by Kathy Doughty. I like sunflowers, so I decided to make mine all sunflowers. I needed a sunflower-sort of centre to each flower. Then I needed some ladybirds and bumblebees. It ended up very different to the sample.

Design Source: Garden Party by Anna Maria Horner and Kathy Doughty

*Machine Quilted by: Sandra Kelly, Art N Quilting Studio*

**99. Frankham, Jane** Mount Olive, NSW  
Liberty Drawn 178 x 138cm  
**Combined Pieced & Appliqué Quilt - Professional**

Hand pieced and appliquéd, then sewn together by machine. To quilt this quilt, I basted it on my Longarm, then 'turned it over' and quilted it from the back following the pattern of the fabric "Drawn" by Angela Walters.

Design Source: Inspired by the Instagram sew-a-long 'Kingfisher quilt'

**100. Shea, Kate** Paddington, NSW  
Community 178 x 140cm  
**Combined Pieced & Appliqué Quilt - Amateur**

Had to drop out of a long-awaited Carolyn Friedlander workshop. Then last minute, good friends stepped up and helped with time & supplies, so I spent a happy day sewing. My riff on her 'Catenary' pattern reflects a great big arc of life and community.

Design Source: Based on Catenary by Carolyn Friedlander

**101. Wheelahan, Jessica** East Lindfield, NSW  
The e1027 quilt 175 x 140cm  
**Modern**

In 2019 we had the privilege of visiting the Eileen Gray designed seaside villa e1027 in the south of France. A long admirer of the work of Gray, pioneer of the Modern movement in architecture, I set about creating a quilt inspired by her designs.

**102. Widders, Grace** Sydney, NSW  
Raiding The Stash 180 x 136cm  
**Modern**

Our changing world has reinforced how important it is to have :

someone to love  
something to do  
and something to look forward to.

**103. Tanti, Tania** Altona Meadows, VIC  
The Short Arsed Masked Quilter with Royal Connections  
162 x 132cm  
**Pieced Quilt - Professional**

This Short Arsed quilter proudly wears her homemade mask as she walks with positivity waiting for the time she can again return to a quilt show. One step at a time xo.

**104. Smith, Louise** Epping, NSW  
Feedsack Frenzy 170 x 123cm  
**Appliqué Quilt - Amateur**

I love scrappy quilts and having a collection of 30's and feedsack fabrics, I was happy to find such a delightful quilt to use them (quilt book 'Quilts of Alaska' by a Historical Society in Juneau Alaska). Block name Orange Peel or Joseph's Coat.

Design Source: Antique quilt from 'Quilts of Alaska' by Gastineau Channel Historical Society - Juneau, Alaska

**105. Evans, Julie** Springdale Heights, NSW  
Ingenua 180 x 110cm  
**Pictorial Quilt**

Ingenua, a woman child of innocence or intrigue, a mystery. Hand painted, appliquéd, embedded with angelina fibres, confetti felt under netting, wool rovings, feathers, wool, lace motifs and beaded embellishments. Free motion stitched.

**106. Lancaster, Linden** Picola, VIC  
Kata Tjuta Cameos 138 x 137cm  
**Art Quilt**

Kata Tjuta (The Olgas) is an ancient formation of boulders and sandstone, still used by the Arangu people for their ancient ceremonies. Walk around it for any amount of time and a myriad of vistas emerge from this awe-inspiring place.

**107. Wakely, Kerry** Harrington, NSW  
William Goes Irish 158 x 158cm  
**Entrant's Top Quilted by Another - Professional**

I like to take the traditional and give it a different look and when I saw the latticed Irish Chain I knew I could make the William Morris fabric work in the design. A feature fabric was used in the centre to give added interest to the lattice.

Design Source: Latticed Irish Chain from Quilters Cache, Marcia Hohn

*Machine Quilted by: Kerry Desmond, Florabella Quilting*

**108. Birch, Martha** Clovelly, NSW  
My Fussy Cutting Fahlia 157 x 157cm  
**Pieced Quilt - Amateur**

The circular design is meant to be 'fussy' cut but Japanese fabrics defy this. I concentrated on balancing the patterns that evolved to enhance the colours and overall effect.

Design Source: Giant Dahlia Quilt by Michelle Yeo Quilt Designs

**109. Jurd, Chris** Blaxland, NSW  
Jungle Rhythm 156 x 156cm

**Pieced Quilt - Professional**

Fabric for the centre star just had to be fussy cut and the background square fabric highlights the centre circle. Two different striped fabrics used for first border and a quirky foundation pieced final border surrounds it all.

**110. Dunstan, Cath** Camperdown, NSW  
Technicolour Dream 151 x 151cm

**Appliqué Quilt - Amateur**

My first attempt at hand appliqué & quilting. A single block that I fell in love with & kept making. I wanted bright colours (orange & hot pink). I learnt about blocks being on point, stepped or standardly arranged. Lesson: don't self teach binding.

Design Source:Mini Mandala by Megan Manwaring

**111. Avalon Quilters** Umina Beach, NSW  
Which Way Now? 153 x 153cm

**Group/Collaborative Quilt**

As a group quilt this ticked all the boxes - assembled scraps were sewn over papers into blocks and subsequently into a top by members using scraps from their own stashes. The variety of fabrics from different sources added colour and movement.

Design Source:Tokyo Subway Map Quilts by Elizabeth Hartmann

**112. Stringer, Jennifer** Taree, NSW  
See How Her Garden Grows 151 x 144cm

**Combined Pieced & Appliqué Quilt - Professional**

Balancing Act as a pieced background, overlaid with hand embroidery, wool felt appliqué, machine appliqué and machine quilting, and includes a special local bee called Tiger Nomia.

Design Source:Pieced background Balancing Act from Jordan Fabrics

**113. Barton, Jacqueline** Ashfield, NSW  
Steam Punk 175 x 141cm

**Entrant's Quilt Top, Quilted by Another - Amateur**

This quilt was my second attempt at curved piecing. I had fun selecting my loudest stash fabrics to put in it.

Design Source:Steam Punk by Jen Kingwell

*Machine Quilted by: Sue Rowles, Sue's Top Finish*

**114. Hayes, Helen** Wantirna, VIC  
Ruby Stars 174 x 150cm

**Combined Pieced & Appliqué Quilt - Professional**

The centre compass was made from Petra Prins templates and the stars were made from Karen Styles' Hexagon Star-a-Day pattern. The setting and appliqué were my own design.

Design Source:Star-a-day by Karen Styles; Centre Compass Petra Prins templates

**115. Knudsen, Stephanie** Mornington, VIC  
Social Distancing 164 x 140cm

**Modern**

One of the many effects of Covid 19 in 2020 was the large number of weddings that had to be postponed during the lockdown period. This was very evident in Victoria which experienced months of lockdown.

**116. Marley, Sharon** Stanhope Gardens, NSW  
Popping Candy 160 x 160cm

**Combined Pieced & Appliqué Quilt - Amateur**

I wanted the quilt to have an explosive feel from the medallion centre out. Subsequent explosions, big and small are represented by the pops of colour. The crunch is represented by the log cabin blocks.

Design Source:Based on Spice Market Quilt by Wendy Williams

**117. Hewitt, Lynn** Caringbah, NSW  
Making Tracks 161 x 161cm

**Modern**

Inspired by a picture of a Modern Log Cabin block, with a limited palette of grey, black and white, and no specific plan, this quilt evolved, row by row. Machine pieced, machine quilted with variegated thread.

Design Source:Design by Art Gallery Fabric Staff in 'Modern Quilts - Designs of the New Century' - The Modern Quilt Guild.

**118. Brown, Anita** Granville, NSW  
Out of Chaos 165 x 165cm

**Modern**

Our guild held a Libs Elliott workshop which used a system of random blocks. I wanted to give this quilt some of my style by quilting to find different shapes with a combination of hand & machine quilting with different threads.

Design Source:Workshop by Libs Elliot

**119. Laurie, Deborah** Forster, NSW  
A Challenging Year 147 x 181cm

**Pieced Quilt - Amateur**

2020 Monthly Improv Challenge set by Pam Russell plus 7 rogue "non-improv" blocks. We kept each other sane through Covid with Whatsapp chats as we shared our unique creations. March's block, "Triangles in Isolation"; 7 black triangles = 7 Aust deaths.

Design Source:Some Blocks inspired/based on work by Lucie Summers, Gwen Marston, Nicholas Ball and Michael James

**120. Hastings, Rebecca** West Ryde, NSW  
I Love an Unburnt Country 188 x 148cm

**Other Techniques - Amateur**

Early January 2020 I had June, a dear friend, staying due to devastating fires on her Tumberumba property. I was designing this quilt amidst smoke haze & daily fire reports. It's my homage to Aussie colours, flora & fauna. Let's protect them.

**121. Lancashire, Isobel** Bathurst, NSW  
My Never Ever Quilt 183 x 158cm

**Display Only**

This quilt was designed by Lynne Alchin. This quilt was made to use up my white and cream stash and to challenge myself with hexagons.

Design Source:Honeycomb coverlet from Averil Colby 'Patchwork Quilts', 1965

**122. Bowdler, Patricia** Summer Hill, NSW  
Aegean Arabesque 175 x 160cm

**Appliqué Quilt - Amateur**

The decorative hand-painted tiles adorning the mosques and palaces of Turkey are magical. I just loved them. With this quilt I have made myself a lasting reminder of my wonderful trip to Turkey. The quilt was a joy to make.

Design Source:Arabic Floral Patterns colouring book, Nick Crossling, Dover Publications

**123. Williams, Wendy** Drummoyne, NSW  
Looking Up 183 x 168cm

**Entrant's Top Quilted by Another - Professional**

I wanted to make a scrappy quilt with a soft colour palette and the rose pink shot cotton I had purchased some time ago. The wool appliqué was a quiet hand stitching project that was an enjoyable distraction during our Covid lockdown.

*Machine Quilted by: Katherine Jones, twocatsquilts*

**124. Mosely, Catherine** Cameron Park, NSW  
Cog and Wheel 185 x 165cm

**Entrant's Top Quilted by Another - Professional**

I've always wanted to make a predominantly brown quilt and finally found the right pattern here in this 'Rusty' Cog and Wheel. The denim background complemented its industrial aesthetic.

Design Source:Cog and Wheel by Denyse Schmidt

*Machine Quilted by: Leanne Harvey, Mount Vincent Quilts*

**125. Westmacott, Pamela** Willoughby East, NSW  
It's a Mystery 177 x 156cm

**Entrant's Quilt Top, Quilted by Another - Amateur**

There's no better challenge than to solve a mystery and this I did with this Chris Jurd designed monthly Mystery Quilt with additions of my own. It was good to have the choice of being able to place the blocks as to one's own liking.

Design Source:Chris Jurd - Design Monthly Mystery Block

*Machine Quilted by: Birgit Hoffman, Black Sheep Quilting*

**126. Hunter, Beverly** Shellharbour City Centre, NSW  
Whimsy Garden 185 x 155cm

**Appliqué Quilt - Amateur**

A fun quilt in bright colours. Hand appliqué and hand quilting.

Design Source:My Whimsical Quilt Garden. Becky Goldsmith and Linda Jenkins

**127. Nugent, Monique** Neutral Bay, NSW  
Mon's Mandolin 188 x 150cm

**Pieced Quilt - Amateur**

I love English paper piecing so when Jodi was organising a Mandolin Sewalong on Instagram back in 2019 I thought I would join in. Fabric is by Cotton and Steel. Hand quilted using Aurifil 12wt.

Design Source:Mandolin Quilt Pattern by Jodi Godfrey, Tales of Cloth

**128. Louie, Deborah** Oyster Bay, NSW  
COVID Clams - Grateful 160 x 178cm

**Modern**

2020 is where everything stopped. Grateful to make 3 Covid Clams Quilts exactly the same for my family. Grateful for the time at home. Grateful for the time to write 3 books. Grateful for being Australian. Heartfelt Grateful for my loving family and friends.

**129. Hall, Linda** Davistown, NSW  
Sunrise with Henrietta and Friends 168 x 168cm

**Combined Pieced & Appliqué Quilt - Amateur**

Made from pattern specifically designed for Merroo Quilt camp in March 1998 by Merelyn Pearce. I then completed the rooster section only. I restarted the project in 2020 finishing March 2021. Backing is a sarong from my early 70's Indonesian travels.

Design Source:Chooks n Chicks and the Cock that Crowed the Morn by Merelyn Pearce.

**130. Evans, Leesa** Wyong, NSW  
Pentacomb 164 x 160cm

**Entrant's Top Quilted by Another - Professional**

Playing with shapes and layouts using English paper piecing and appliqué.

*Machine Quilted by: Kerry Desmond, Florabella Quilting*

**131. Moody, Diane** Denistone, NSW  
Sixty Shades of Green 160 x 160cm

**Group/Collaborative Quilt**

This quilt is a combination of sixtieth birthday blocks, made for me by Eastwood Patchwork Quilters. I designed the Tahitian appliqué tree in the centre. The blocks were offset to create a sense of movement.

Design Source: Hill and Valley from Nancy J Martin's Perpetual Calendar

**132. Denham, Lorna** New Lambton Heights, NSW  
My Garden Path 166 x 154cm

**Entrant's Quilt Top, Quilted by Another - Amateur**

I have so many scraps in strips that I was delighted to spot the 'Garden Path' quilt by Freddie Moran and Gwen Marston. However, there seems to be just as many scraps left over, if not more!

Design Source: Garden Path in 'Freddie and Gwen Collaborate Again', Page 150. Pub. 2009

*Machine Quilted by: Cathy Calvert, Lake Edge Quilting*

**134. Matter, Françoise** Springwood, NSW  
Coasting Along 175 x 142cm

**Other Techniques - Amateur**

A lovely way to use up my favourite fabrics and scrap batting. In addition it was fun to add in my embroideries, cross-stitches, sashiko, boro, and Blackwork. A piece of op shop tea-towel is in there. See if you can spot it. And Molly, my dog too.

Design Source: Quilt-as-you-Go Hexagon, The Village Quilt Shop, Mittagong

**135. Gordon, Carolynne** Rozelle, NSW  
Far Out Bean Sprout 130 x 116cm

**Modern**

'Far Out' began as one thing, morphed into another, then transcended both. It could be viewed as a commentary on anything that challenges us personally, our community, country, the natural or political world. Just 'far out', what's next?!

**136. Lambers-Kelly, Isabel** Heathcote, NSW  
Bubble and Squeak 172 x 171cm

**Modern**

My quilt is playful modern on one side and crazy kitsch on the other. I hand quilted in big arcs and I firmly believe in showing the knots. It gives me a sense of freedom which I use in my quilt top making as well. Scrappy quilts fill my heart.

Design Source: Checkered Garden blocks: @filminthefridge tutorial

**137. Wallbridge, Glenys** Grafton, NSW  
Robin's Flight 173 x 173cm

**Combined Pieced & Appliqué Quilt - Amateur**

This traditional English framed quilt features hexagons, eight pointed stars and six pointed stars. All done by hand including binding being attached by hand. Hand quilted.

Design Source: Robins Nest Pattern by Karen Styles

**138. Hennessy, Terry Anne** Warriewood, NSW  
Lewis Coverlet in Blue 176 x 174cm

**Appliqué Quilt - Amateur**

appliquéd in blues and green on a natural background. Started in class with Susan Smith at a Karen Cunningham Summer School workshop.

Design Source: Lewis Coverlet Pattern by Susan Smith

**139. Da Mata, Carolina** Liverpool, NSW  
Flowers and Fruits 177 x 177cm

**Appliqué Quilt - Amateur**

Quilt covered in baskets of fruit and flowers with birds surrounded by grape vines on a cream background .

Design Source: Borders & Medallions by Elly Sienkiewicz

**140. Waters, Mariya** Doncaster, VIC  
Starflower 183 x 183cm

**Combined Pieced & Appliqué Quilt - Professional**

Teal/Blue and burgundy background with bright yellow appliqué flowers and teal butterflies.

**141. Serong, Chris** Essendon, VIC  
Du Pont Circle 183 x 181cm

**Entrant's Top Quilted by Another - Professional**

My mini Georgetown circle, lots of fussy cutting, a lovely portable pattern in a traditional design. In the public domain.

*Machine Quilted by: Desley Maisano, Addicted to Quilts*

**142. Buchanan, Ruth** Glenbrook, NSW  
Tell Me... (QR Code) 184 x 184cm

**Modern**

The pandemic highlights the question Mary Oliver asks in her poem "Summer Day" – "Tell me, what is it you plan to do with your one wild and precious life?" Hundreds of unrepeatable fabrics, a broken map, birds – QR code, question, quilt, metaphor.

**143. Wise, Glenda** Tea Gardens, NSW  
Variation on an Antique Wedding Sampler 172 x 168cm  
**Combined Pieced & Appliqué Quilt - Amateur**

Antique Wedding Sampler begun in a class with Diane Gibson in 2013. Elements from some of the blocks are used as sashings and tramways. Corner blocks are pieced from flying geese offcuts.

Design Source:Antique Wedding Sampler based on a quilt by Charlotte Gillingham c 1842-1843, Philadelphia Museum of Arts collection

**144. Gallegos, Debra** Barrack Heights, NSW  
Tranquil Koi 187 x 122cm  
**Pieced Quilt - Amateur**

Mosaic hexagon, zigzag edge quilt with koi panel.

**145. Johnson, Lisa** Wentworthville, NSW  
Memoirs of Japan 192 x 144cm  
**Pieced Quilt - Amateur**

After visiting Japan in 2019 I wanted to make a quilt to remind me of the holiday. Geisha panel offset with lanterns. Framed with black borders and accented with blue fans. Quilted with cherry blossoms, oriental lotus garden, clouds and fans.

**146. Cook, Lois** Ermington, NSW  
A Fussy Cut Fantasy 193 x 146cm  
**Display Only**

This quilt was made with large circles of different fabrics on a blue fabric. This has been hand and machine quilted. These are some of my favourite colours and I really enjoyed making this quilt with the fussy cut technique.

**147. Langhorne, Rhonda** Kellyville, NSW  
Doreen Spoke to Me 191 x 122cm  
**Pieced Quilt - Amateur**

After reading Doreen Speckmann's book, I couldn't wait to play with this block hence my design. Then delving into my grunge collection and after many hours quilting on my Sweet Sixteen came 'Doreen spoke to Me'.

Design Source:Block from Pattern Play Creating Your Own Quilts by Doreen Speckmann

**148. John, Karen** St Ives, NSW  
Seeds for Thought 189 x 197cm  
**Entrant's Top Quilted by Another - Professional**

'Seeds for Thought' is a combination of pieced and individual appliqué blocks, each an exploration of a vessel with flowers, embellished with embroidery. Each appliqué block tells a small story and carries a notion of whimsy with a little 'creature'.

*Machine Quilted by: Leanne Harvey, Mount Vincent Quilts*

**149. Butler, Gary** Jamberoo, NSW  
Circular Cohesion 185 x 185cm  
**Pieced Quilt - Amateur**

The quilt is my version of Jen Kingwell's 'Circle Game' quilt. I chose to use Jen's woven fabrics and as I started hand piecing the quilt I added the teal shot cotton to both highlight and bring cohesion to the circles and their borders.

Design Source:The Circle Game by Jen Kingwell

**150. Power, Susan** Bexley, NSW  
What Was I Thinking??!! 186 x 183cm  
**Entrant's Quilt Top, Quilted by Another - Amateur**

This is the second of Chris Jurd's 'Snowball Circle' pattern. I stepped further out of my comfort zone with this one and love it!!

Design Source:Snowball Circle by Chris Jurd

*Machine Quilted by: Sue Rowles, Sue's Top Finish*

**152. Geczy, Jenny** East Maitland, NSW  
Dutch Experience 178 x 178cm  
**Entrant's Quilt Top, Quilted by Another - Amateur**

Dutch Experience 2018-2020. The inspiration came from a visit to Amsterdam where I purchased the centre panel and some fabric. Commenced in a class with Di Ford, then used 'Primarily Quilts' book for guidance. appliqué border is my variation.

Design Source:Primarily Quilts by Di Ford

*Machine Quilted by: Jane Frankham, QWILT*

**153. Sperring, Jennifer** Yarravel, NSW  
My Crazy Beauties 176 x 176cm  
**Pieced Quilt - Professional**

I designed this quilt in EQ8 as a Block of the Month and wrote the instructions for commercial use. It is foundation pieced and machine quilted on a domestic machine. The design can be made as colourful as this quilt or toned down with pastels.

**154. Tyler, Mandie** Eastwood, NSW  
Golden Years 174 x 174cm  
**Entrant's Quilt Top, Quilted by Another - Amateur**

This quilt was made for my parents' 50th Wedding anniversary in 2020. It represents their love and life together, made up of many moments.

*Machine Quilted by: Irene Andrews, Irene Andrews Quilting*

**155. Bird, Lynne** Castle Hill, NSW  
Birthday Treats 172 x 172cm  
**Group/Collaborative Quilt**

Rosemount Quilters have a different birthday project each year. I have combined 3 years into one quilt. 2011 was 9 patch, 2012 was heart or star and 2015 drunkards path.

**156. Thrift, Lynette** Narraweena, NSW  
Memories 152 x 122cm  
**Pieced Quilt - Amateur**

Fabrics, laces and embellishments from my past with memories are preserved in this quilt and enhanced with hand embroidery. Some fabrics are over 80 years old.

**157. Krige, Bernice** Baulkham Hills, NSW  
Secret Garden 194 x 148cm  
**Pieced Quilt - Amateur**

Using my love of curves I devised my own curved paper piecing method. The results of a few random curved flourishes, on a 6" square, have created a very exciting kaleidoscope of designs, perfectly complemented by the large colourful floral prints.

**158. Hemming, Darlene** Lane Cove, NSW  
Emily - Next Gen 195 x 148cm  
**Appliqué Quilt - Amateur**

Originally started for Emily, my nephew Andrew's girlfriend who will now in 2021 become his wife. I will be holding it now until they have their first daughter whom I hope will then pass it on to her daughter as a memory of me - great great Aunt.

Design Source: The Dress by Laura Heine

**159. Reynolds, Joan** Coffs Harbour, NSW  
Surprise 182 x 145cm  
**Entrant's Quilt Top, Quilted by Another - Amateur**

Only one fabric used to make kaleidoscope centres to form hexagons.

*Machine Quilted by: Sandra Kelly, Art N Quilting Studio*

**160. Illawarra Moderns** Windang, NSW  
Dolly's Dream 190 x 160cm  
**Group/Collaborative Quilt**

'Speak even if your voice shakes' were words left behind when Dolly Everett, 14, took her life to escape intense online bullying. The spikes represent the pain words cause and the text boxes suggest the online aspect. The quilting reflects the message.

Quilted by our group member, Jenny Hancock of Angel Cake Quilting.

**161. Boundy, Glenda** Whitebridge, NSW  
Flower Garden 190 x 176cm  
**Pieced Quilt - Amateur**

Yoko Saito's design & pattern from "Scrap Valley Book." Most enjoyable quilt to make. Hexagon paper pieced and hand quilted. Using mainly Japanese plaid fabrics and a few extras to make it "pop".

Design Source: Design by Yoko Saito

**163. Timmins, Chris** Grafton, NSW  
Lockdown 190 x 190cm  
**Entrant's Top Quilted by Another - Professional**

Block of the day during Lockdown. 64 days between quilting classes and a block completed each day. Blocks cut with Accuquilter. Quilted by Anne MacGee in Bellingen.

*Machine Quilted by: Anne MacGee, Country Quilting*

**164. Chilton, Jillian** Roseville, NSW  
Fred's Stars 193 x 193cm  
**Pieced Quilt - Amateur**

This Feathered Star traditional block was made using my husband's favourite colours and allows for fussy cutting in the centre. Made using Marti Michelle templates.

**165. Treen, Janet** Helensburgh, NSW  
Rose Dream 195 x 195cm  
**Appliqué Quilt - Professional**

Floral appliqué quilt in the medallion style using a grey ombre fabric for the background. I chose a softer colour palette to enhance the use of the grey background and added embroidery embellishment and trapunto in the quilting.

Design Source: Medallion style quilt setting from Toyoko Nakajima.

**166. Parr, Angelique** Westleigh, NSW  
The Journey Begins 198 x 198cm  
**Combined Pieced & Appliqué Quilt - Amateur**

This quilt marks the beginning of an exciting new journey for me. In 2018 I started my first quilt, with the help of Megan Manwaring. I'm so excited to have it finished. If like me you're scared to start, just give it a go. It's so much fun.

Design Source: Patchwork Primer by Megan Manwaring

**167. Garlick, Kim** Mosman, NSW  
Fruit Tingles 198 x 198cm  
**Entrant's Quilt Top, Quilted by Another - Amateur**

This quilt holds many memories of my time living through 'Circuit Breaker' in the 'Lion City', Singapore, with my colours becoming bolder and brighter each day. It's a mixture of English paper piecing and needle turn appliqué.

Design Source: Fruit Tingles by Sue Daley Designs

*Machine Quilted by: Birgit Hoffman, Black Sheep Quilting*

**168. Stewart, Karen** Werrington County, NSW  
Trip Around the World 196 x 196cm  
**Entrant's Top Quilted by Another - Professional**

I used a large variety of my favourite designer Anna Maria Horner's fabrics to piece this quilt. I always like Brigitte Giblins quilts and I thought this would be a great introduction to her works.

Design Source: Feathering the Nest by Brigitte Giblin

*Machine Quilted by: Birgit Hoffman, Black Sheep Quilting*

**169. Crouch, Linda** Doncaster, VIC  
Fickle Pickle Clan 193 x 193cm

**Combined Pieced & Appliqué Quilt - Professional**

Started this quilt in 2007, found the piecing very challenging. It sat as a UFO for many years, then in 2018, I decided to finish it. Working on the hand quilting every day, it took over a year to complete.

Design Source:Centre: Pickle Dish pattern by Karen Styles, Australian Patchwork and Quilting, Vol7 No10.

**170. Wallin, Margie** Toormina, NSW  
Twilight 196 x 190cm

**Entrant's Quilt Top, Quilted by Another - Amateur**

Thanks to Catherine Butterworth for a fun workshop, and the exploration of hexagon design and construction. However, I never want to sew split diamonds again.

Design Source:Design by Catherine Butterworth

*Machine Quilted by: Sandra Kelly, Art N Quilting Studio*

**172. Morrison, Stephanie** Westleigh, NSW  
The Pink 100 192 x 178cm

**Entrant's Quilt Top, Quilted by Another - Amateur**

If you know me, pink is my favourite colour so there had to be a pink quilt. These 100 blocks were pieced over 100 days during 2019 in a sew along. It reminds me of the beautiful Pink Quilt I had on my bed as a child.

Design Source:Kinship 100 Block Fusion Sampler by Angie Wilson and Bec Proschogo

*Machine Quilted by: Birgit Hoffman, Black Sheep Quilting*

**173. Laird, Suzanne** Lawson, NSW  
For Quinn 194 x 163cm

**Pieced Quilt - Amateur**

Blocks of different sizes and designs showcasing prints of interest to a small child. A companion piece to his sister's quilt, this quilt also has a central block section with two borders.

Design Source:Inspired by a Freddie Moran and Gwen Marston design

**174. Davis, Jennifer** Waitara, NSW  
Home Learning 192 x 151cm

**Pieced Quilt - Amateur**

When we went into lockdown last year, my daughter was suddenly learning from home & needing my support. I stayed close & stitched; together we navigated a new normal. It was a wonderful chance to learn alongside her. It was my home learning.

Design Source:Mandolin Quilt - Tales of Cloth

**175. Kelly, June** Coffs Harbour, NSW  
William's Garden 195 x 150cm

**Appliqué Quilt - Professional**

I commenced 'William's Garden' at a weekend class at Toowoomba with Michele Hill in 2013.

Design Source:Pattern by Michele Hill

**176. Brodie, Trudy** Killara, NSW  
Alaskan Spring 194 x 148cm

**Pieced Quilt - Professional**

A quilt block of my design to feature 2 fabrics bought in Alaska - the large floral and the speckled background. The large floral is surrounded by other flowers, bees, birds, grasses and vines. Pieced and quilted by machine.

**177. Stacy, Miriam** Dee Why, NSW  
Blue and Green Kantha 198 x 184cm

**Entrant's Quilt Top, Quilted by Another - Amateur**

I enjoy working with batik and colour dyed fabric and wanted to create a quilt in large panels of fabric. I also wanted to incorporate Indian kantha hand embroidery into the quilt as an added dimension.

Design Source:Beyond the Border Quilt

by Brandon Mably

*Machine Quilted by: Sue Rowles, Sue's Top Finish*

**178. Donovan, Sandra** Tennyson Point, NSW  
X Marks the Spot 213 x 183cm

**Group/Collaborative Quilt**

Our friendship group has been together and making blocks for each other for 35 years. We are an inspiration to each other. I received 16 blocks for this quilt in 2018.

Design Source:Adapted X plus block attributed to Nancy Cabot

**179. Martyn, Vicki** Castle Hill, NSW  
Flames Across Our Land 220 x 180cm

**Pieced Quilt - Amateur**

'Flames Across Our Land' was quilted during the devastating bushfires of the 2019-20 Summer. Its fabric sections inspired individual quilting designs. This quilt is a stirring reminder of the loss, despair and courage of fellow Australians.

Design Source:The Difference Between Things by Victoria Findlay Wolfe



**180. Ross, Claire** Kellyville, NSW  
Groove is in the Heart 200 x 163cm

**Entrant's Quilt Top, Quilted by Another - Amateur**

Wonderful design to use up stash materials and also use new materials colours. Enjoyed learning new technique of appliqué. Amazed that different materials blend. My first bed quilt.

Design Source: Groove is in the Heart by Rachael Daisy Designs

*Machine Quilted by: Birgit Hoffman, Black Sheep Quilting*

**182. Stuart, Louise** Woodford, NSW  
X Marks the Spot 186 x 140cm

**Pieced Quilt - Amateur**

In our world of compliance..... X representing, stand here, sign here, no entry, stop! Remember to enjoy the sunshine and the brighter side of life.

Design Source: MSG Dodecagon by Margaret Sampson-George

**183. Higgs, Sonia** Wodonga, VIC  
Bev's Garden 193 x 142cm

**Combined Pieced & Appliqué Quilt - Amateur**

Based on traditional 'pot holder quilts' where each block is hand quilted and bound, then joined to the other blocks with decorative herringbone stitch on the joins. Hand pieced and quilted, some blocks were machine pieced.

Design Source: Joseph & Julia designed by Shelley Kelly, Skellywags

**184. Syrett, Margy** Darlinghurst, NSW  
One Nine Patch A Day 200 x 154cm

**Entrant's Quilt Top, Quilted by Another - Amateur**

I happened upon a Facebook group called 'One Nine Patch A Day' and signed up for 2020 to feed my scrap quilt addiction. You can keep up, get ahead, or get behind and then catch up again - I did all three. 3294 scraps later, I'm going again in 2021.

*Machine Quilted by: Sue Rowles, Sue's Top Finish*

**185. Keneally, Jane** Gladesville, NSW  
COVID Garden Party 213 x 160cm

**Modern**

Making this quilt, during lockdown I started with the dark fabric that reminded me of a coronavirus. It is my hope that goodness will come out of this pandemic and I felt that was best illustrated by turning it into a beautiful garden.

Design Source: Garden Party by Anna Maria Horner and Kathy Doughty

**186. Bonner, Liz** Lyons, ACT  
Heavenly Stars 220 x 180cm

**Pieced Quilt - Professional**

This is another of my 2006 travel projects using traditional block patterns and reproduction fabrics. Now with COVID's help it's finally quilted!

**187. Dodd, Rachael Daisy** Springwood, NSW  
Flamingo Ice Cream Party 215 x 175cm

**Entrant's Top Quilted by Another - Professional**

What started as an experiment with scraps soon grew into a colourful quilt. The stars have been made without a template so each one is unique. The name was inspired by the mix of happy fabrics, especially the fabric in the 4th row down, 4 across.

*Machine Quilted by: Leanne Harvey, Mount Vincent Quilts*

**188. Sydney Modern Quilt Guild** Kurraba Point, NSW  
Bridge over Coloured Waters 205 x 172cm

**Group/Collaborative Quilt**

SMQG decided to make a quilt celebrating the festival of Vivid, a coloured light event around Sydney Harbour and bridge. Our members used foundation, regular & improv piecing with the hand & machine quilting to give an impression of lights on the water.

**189. Fooij, Helena** Seaforth, NSW  
Twilight 205 x 205cm

**Combined Pieced & Appliqué Quilt - Amateur**

Appliqué with wool-felt. I wanted to finish this quilt for the 2020 Quilt Show, that didn't happen, neither the finish of this quilt.

This is another chance.

Design Source: Twilight by Wendy Williams

**190. Ochtman, Wendy** West Ryde, NSW  
Fancy Folk 200 x 200cm

**Appliqué Quilt - Amateur**

I have made Sarah Fielke's "Simple Folk" Block of the Month but I used decorative stitch machine appliqué to make it "Fancy Folk" instead.

Design Source: Simple Folk by Sarah Fielke

**191. Sefton, Dianne** Tarrawanna, NSW  
Shibori Sunshine 200 x 200cm

**Entrant's Quilt Top, Quilted by Another - Amateur**

I wanted to make my first Log Cabin quilt a little bit different to the traditional in layout and colours. I chose Shibori as I really like Japanese fabrics and felt that the grey and yellow fabrics help to highlight the Shibori colours.

*Machine Quilted by: Irene Andrews, Irene Andrews Quilting*

**192. Merriel, Shirley** Caringbah, NSW  
Wedding Quilt 210 x 230cm

**Entrant's Quilt Top, Quilted by Another - Amateur**

A wedding quilt for grandson Grant and his fiancée Hazel. The wedding had been planned to take place in the Philippines in November 2020.

*Machine Quilted by: Anne Singleton, ALS Quilts*

**194. Singleton Quilters Inc** Singleton, NSW  
Almost Hawaiian 200 x 200cm

**Group/Collaborative Quilt**

Singleton Quilters' Raffle Quilt 2021. Hawaiian blocks made with hand dyed fabric, hand appliquéd by members and quilted by member Jane Frankham.

Design Source:Some blocks from Poakalani & Co

**195. Whellum, Wendy** Col Light Gardens, SA  
Saturn and All the Stars 200 x 200cm

**Appliqué Quilt - Professional**

This quilt is reminiscent of many antique quilts held in museums. The original setting was quite different and had many more blocks. I chose my favourites from the Maltaville Album quilt and added the sashing.

Design Source:Blocks from the Maltaville Album quilt, held in the Smithsonian Museum. Pattern/drawings by Margaret Mew

**196. Harvey, Leanne** Mount Vincent, NSW  
Zahra 205 x 205cm

**Pieced Quilt - Professional**

Zahra is made from 64 of the same curved pieced block, rotary cut using a template set I designed. The design is based on a simplified Double Wedding Ring. She was first quilted with a computerised edge-to-edge design and then over-quilted freehand in the colours.

**197. Nelson Bay Quilters** Corlette, NSW  
Floral Fantasy 212 x 212cm

**Group/Collaborative Quilt**

Vertical garlands of Fantasy Flowers surrounded by whimsically coloured borders. Stems of striped fabrics create a twisted effect and the variation of block size and texture provides a subtle backdrop for the colourful appliqué.

Design Source:Design by Wendy Nutt

**198. Flockhart, Kristine** Kareela, NSW  
The Rowdy Flat Library Quilt 210 x 210cm

**Entrant's Quilt Top, Quilted by Another - Amateur**

Every aspect of this quilt was a delight to sew and I looked forward to planning fabric for each new block. My passion for needle turn appliqué was well satisfied. The beautiful quilting by Vicky Greenstein added the perfect finishing touch.

Design Source:Pattern by Susan Smith of Patchwork on Stonleigh, Victoria

*Machine Quilted by: Vicky Greenstein, My Sewing Supplies*

**199. Uriarte, Lorena** Maroubra, NSW  
2021 Unmasked 188 x 210cm

**Modern**

Tired of making face masks, and in need of some fun sewing, I cut up six Ruby Star Society face mask panels using the Stack & Whack method. Glimpses of instructional text can be seen amongst the pretty patterns.

**200. Jenkins, Robyn** Jordan Springs, NSW  
Market Garden Variation 220 x 207cm

**Combined Pieced & Appliqué Quilt - Amateur**

Felt wool appliqué, appliqué of four patch square cut-outs, and hand embroidery blocks. Hand embroidered sashing. Quilt made twice as large as original with extra outer border row. Moveable machine quilted - some free motion, some ruler work.

Design Source:Market Garden quilt designed by Anni Downs, Hatched and Patched

**201. Klompe, Isabella** Double Bay, NSW  
How Does Your Garden Grow 218 x 196cm

**Entrant's Quilt Top, Quilted by Another - Amateur**

The quilt is made up of 9 patch blocks in bright colours with a strong floral fabric in alternate blocks. Flowers are then cut out of another printed fabric (Broderie Perse) and raw edge appliquéd around and over the background blocks.

Design Source:Nine Patch Paradise by Beth and Trevor Reid, 'the Quilters Kaleidoscope' Published 1992.

*Machine Quilted by: Sue Rowles, Sue's Top Finish*

**202. Dickson, Janette** Whitebridge, NSW  
Blooming Gorgeous 220 x 220cm

**Appliqué Quilt - Professional**

Each block is like a mini quilt. It was a fun quilt to make. It was named for all the 'blooming gorgeous' ladies that come to my Sit and Sew groups at Thorpe and Co Sewing Machines and to push them to use their machines for more than just piecing!

**203. Doyle, Rachael** New Lambton, NSW  
Opal Cutouts 217 x 211cm

**Entrant's Quilt Top, Quilted by Another - Amateur**

At a workshop with Lorena Uriarte at Fifi's Fabricology whilst attending a family wedding. I was wanting to work with solids but couldn't go past to include one patterned fabric, so I add a little twist, 3D.

Design Source:Opal Essence by Lorena Uriarte

*Machine Quilted by: Leanne Harvey, Mount Vincent Quilts*

**204. Spann, Betsie** Foster City California USA  
Declassified But Redacted 216 x 216cm  
**Pieced Quilt - Amateur**

Inspired by the backing fabric, redacted Area 51 documentation released by the US government in 2013 under the Freedom of Information Act. Area 51 is a UFO folklore reference to a military installation in Nevada for testing experimental aircraft.

Design Source:Labyrinth Walk by Christopher Florence

**205. Denny, Rachelle** Glenelg North, SA  
Harmony 214 x 215cm  
**Combined Pieced & Appliqué Quilt - Professional**

Harmony uses seven original mandala style appliqué blocks, framed with foundation pieced flying geese. 13 full, 8 half and 4 quarter blocks as well as 648 flying geese make up the quilt. Designing these blocks became very addictive but so much fun.

**206. Andrews, Anne** Surrey Hills, VIC  
My Almost Blue and White Quilt 207 x 164cm  
**Pieced Quilt - Professional**

Hexagons in a diamond formation.

**207. McGoogan, Lauren** Ryde, NSW  
Black, White and Green 208 x 165cm  
**Entrant's Quilt Top, Quilted by Another - Amateur**

This quilt was designed to be only two colours. I chose black and white and then decided to add a bit of colour with the green. An enjoyable quilt to make.

Design Source:Rumour Has It by Wendy Williams

*Machine Quilted by: Kareen Yelland, Tanglewood Quilting*

**208. Ogle, Helen** North Epping, NSW  
Dead Jane 215 x 215cm  
**Pieced Quilt - Amateur**

The skeletons said 'make me!'; with a cheerful 'Trip Around the World' colour scheme and English paper piecing (paper pieces modification of Brenda Papadakis' book 'Dear Jane'). Completed after 3 years during 'Covid 2020', it had to be called Dead Jane.

Design Source:Dear Jane by Brenda Papadakis

**209. Rose, Elizabeth** Queanbeyan, NSW  
Smooched Checkerboard 217 x 217cm  
**Pieced Quilt - Professional**

After collecting Kaffe Fassett blue and white fabric for years, I finally used them in this checkerboard Log Cabin quilt. Made so the colours smooch together, with only a hint of the checkerboard.

**210. McDonald, Margaret** Wodonga, VIC  
Nestled 220 x 220cm  
**Entrant's Top Quilted by Another - Professional**

Begun with a couple of fabrics from the V&A fabrics released for the 2011 quilt exhibition.

Design Source:EQ7 and 8 software for blocks and sashing squares

*Machine Quilted by: Susan Campbell, Rowdy Flat Quilting*

**211. Carter, Janet** Taupo, New Zealand  
Sands of Time 220 x 220cm  
**Pieced Quilt - Amateur**

A continuous flow from one timer to the next giving the feeling of time continuously flowing. The quilting reflects the flow through sand and fauna.

Design Source:Clever Curves Piecing by Toby Lischko

**212. Lewandowski, Sharon** Carss Park, NSW  
in Sync 220 x 205cm  
**Appliqué Quilt - Amateur**

'In Sync' is my version of the wonderful 'Syncopation' by Marg Sampson-George. It was completed in Marg's classes at Material Obsession, over the past few years. Thank you to all the class members who have encouraged me to stay the course.

Design Source:From Take an Element by Marg Sampson-George

**213. Rundle, Jane** Wakerley, QLD  
Red and White 1 220 x 208cm  
**Pieced Quilt - Professional**

Simple yet stunning. I love traditional quilt blocks, and red and white together. An attempt to use up some scrap fabric. There are still a lot of red fabrics in my scrap box!

**214. Campbelltown Patchwork & Quilters Guild** Sussex Inlet, NSW  
Spruced Goose 206 x 206cm  
**Group/Collaborative Quilt**

This quilt was chosen to take advantage of our bright colours, as we need it to be clear & eye-catching. This quilt is 1st prize in our (CPQG) raffle which is our major fundraiser for Campbelltown local charities.

Design Source:Design by Nancy Mahoney

**215. Budd, Meredith** Kootingal, NSW  
The Plight of the Honeybees 240 x 240cm  
**Pieced Quilt - Professional**

This quilt came from a story on Kangaroo Island's bees - dark greys reflect the fire's devastation, but in the fabrics you see nature's resurgence. The bees are fussy cut to fit into the blocks and form patterns which reflect the balance of nature.

**216. Rouse, Pamela** Horsley, NSW  
Aunty Tess 214 x 214cm

**Combined Pieced & Appliqué Quilt - Professional**

This quilt was hand appliquéd, hand pieced and machine quilted by me after a trip to Threadbear, Castlemaine VIC. I used mauve for the borders as it is my favourite colour.

Design Source:Aunty Tess by Corliss Searcey of Threadbear

**217. Doughty, Kathy** West Ryde, NSW  
A Colourful Auntie Green's Garden 230 x 198cm

**Appliqué Quilt - Professional**

It is my passion to consider traditional quilts in regard to colour and to then update them using what is available now. Auntie Green's Garden is a classic Australian design and the pattern is by Irene Blanck @focusonquilts.

Design Source:Design by Irene Blanck, @focusonquilts

**218. Blue Mountains Quilters Inc** Leura, NSW  
Ruby Rosehips 230 x 193cm

**Group/Collaborative Quilt**

As members were unable to gather during 2020 our raffle quilt Ruby Rosehips evolved. With Marg's assistance & guidance we set out to put together 50 packages to send out to 35 willing members. We look forward to our Blue Mountains Quilt Show 2022.

Design Source:Ruby Rosehips by Marg Sampson-George

**219. Howse, Janet** Strawberry Hills, NSW  
Memorable Travels with My Daughter 223 x 187cm

**Entrant's Quilt Top, Quilted by Another - Amateur**

Started on a trip with my adult daughter to Scotland, Stockholm and London in October and November 2017, I wanted a bright and happy quilt after the recent loss of my partner. I used stash fabric, with the quilt completed in early 2020.

*Machine Quilted by: Sue Rowles, Sue's Top Finish*

**220. SydModSquad** Waitara, NSW  
Rainbow Kinship 230 x 180cm

**Group/Collaborative Quilt**

Our group is one of friendship first, so the Kinship Sampler was a natural choice for us! And of course, it wouldn't be ours without rainbows...

Design Source:Kinship 100 Block Fusion Sampler by Angie Wilson and Bec Proschogo

**221. Hough, Kim** Lindfield, NSW  
Funky Spring Pots 220 x 171cm

**Appliqué Quilt - Amateur**

Funky Spring Pots' was made in 2019 when I attended classes with Kathy Doughty at Material Obsession. I used lots of bright saturated Kaffe Fassett fabrics and fun appliqué techniques taught by Kathy and hand quilted with Perle 8. It was a joy to make.

Design Source:Spring Pots from Organic Appliqué by Kathy Doughty

**222. Graham, Kaye** Wahroonga, NSW  
Hexie Kisses 206 x 163cm

**Entrant's Quilt Top, Quilted by Another - Amateur**

The bright colours of the hexagons in Jen's quilt caught my eye and I was able to use fabric from my stash to make the 'kisses'.

Design Source:Hexie Kisses by Jen Kingwell Design

*Machine Quilted by: Maralyn Iwanczuk,*

**223. Harris, Robyn** Waratah, NSW  
Netherfield 230 x 230cm

**Entrant's Quilt Top, Quilted by Another - Amateur**

Netherfield is a combination of English paper piecing, appliqué and machine pieced borders. I attended classes with Katrina Hadjimichael at Camden Stitching Cupboard in 2019. It was quilted by Claire Fairless of Meadowie NSW.

Design Source:Netherfield by Katrina Hadjimichael

*Machine Quilted by: Clare Lewis, Never Ending Quilting*

**225. Masterton, Dorothy** Copacabana, NSW  
My LasPass 228 x 193cm

**Entrant's Quilt Top, Quilted by Another - Amateur**

When I first saw this quilt I thought 'How amazing, I could never do that!'. But once I started I couldn't stop, and loved putting every little piece together. It took approximately 9 months to complete.

Design Source:La Passacaglia by Willyne Hammerstein

*Machine Quilted by: Sharon French, Morning Star Quilting*

**226. Baird, Hilda** Bowral, NSW  
Hothouse Sampler 223 x 199cm

**Appliqué Quilt - Amateur**

My Sampler design using a selection of Sue Cody's appliqué patterns from the design folder supplied with her classes. Inspirational classes, new techniques and a fun venture into a brighter colour palette.

Design Source:Appliqué designs by Sue Cody

**227. Lewis, Clare** Medowie, NSW  
Caesar 175 x 120cm

**Other Techniques - Professional**

I designed this quilt for my son, Caesar. The Roman numerals depict his birthdate. I quilted it on my Gammill Classic, with no stitch regulator or computer - it's all completely hand-guided and freestyle. I really enjoy custom quilting freehand.

**228. Thompson, Skye** Culburra Beach, NSW  
Penguin Bloom 200 x 120cm

**Pieced Quilt - Amateur**

I always name my show quilt after a film, so this year is no exception. The name is apt being black and white and what looks to be a flower blooming. Thanks to my MMM crew and Zoom buddies for their company during its creation.

Design Source:Some elements from Sugar and Spice by Stephanie Luiere

**229. Mortensen, Suzanne** Gymea Bay, NSW  
Quilt of Crosses 226 x 201cm

**Entrant's Quilt Top, Quilted by Another - Amateur**

Designed by Lucy Boston, called Quilt of Crosses.

Design Source:Patchwork of the Crosses by Lucy Boston

*Machine Quilted by: Vicky Greenstein, My Sewing Supplies*

**230. Henriksson, Philomena** Carlingford, NSW  
Colour Coded 234 x 201cm

**Pieced Quilt - Amateur**

This is a scrap quilt. I was hoping to use most of my scraps! It was a way to maintain calm and create. I love the colours and the memories in the fabrics left over from other quilts. I added a border to increase the size and use up more fabric.

Design Source:Color Coded by Diane Harris

**231. Pritchard, Denise** Camden, NSW  
Two Hearts United 240 x 226cm

**Entrant's Quilt Top, Quilted by Another - Amateur**

A traditional Storm at Sea block in scrappy black, grey and cream colour scheme chosen. Reds and purples added to highlight 'Two hearts united'. A gift for my beautiful son and son-in-law. With thanks to a Quilt sister.... it's finished. Hooray!

*Machine Quilted by: Birgit Hoffman, Black Sheep Quilting*

**233. Welsh, Wendy** Wellington, New Zealand  
Summer in Torquay 207 x 167cm

**Pieced Quilt - Amateur**

I started this quilt after I visited Amite Textiles in Torquay, Victoria. I was inspired by the beautiful quilts on display, so I decided to make a quilt using only soft, calming colours. It's a break from tradition for me, but I love it.

Design Source:Flea Market Dash by Jen Kingwell

**234. Hoffman, Birgit** Spring Farm, NSW  
Fishbones 228 x 168cm

**Modern**

The piecing of this quilt helped me conquer my fears of Y-seams. The quilt top was made in a class with Michelle Marvig. I loved the simplicity of the design and the negative space which I could then enhance with machine quilting.

Design Source:Fishbones by Michelle Marvig

**235. Griffiths, Sue** McLeans Ridges, NSW  
The Purple Wave 233 x 177cm

**Combined Pieced & Appliqué Quilt - Professional**

The centre panel was designed as a tessellation challenge. Amphorae were made to fit together. The ships are merchant ships carrying amphorae and metal ingots (in the border). The quotes are from a translation of 'The Odyssey' by Emily Wilson.

**236. Roberts, Yvonne** North Ryde, NSW  
Irish Heritage 230 x 183cm

**Pieced Quilt - Amateur**

A Double Irish Chain quilt using fabrics from my stash, also including some green fabric from a dress I wore in the 70s!

**237. Cashman, Rae** Burleigh Waters, QLD  
My Pincushion Quilt 232 x 192cm

**Entrant's Top Quilted by Another - Professional**

The original heirloom scrap quilt in the Shelbourne Museum was made around 1860. Piecing the curves was particularly challenging and I am pleased that it represents the original really well.

Design Source:Enduring Grace by Celia Y Oliver 1997 Shelbourne Museum Publication

*Machine Quilted by: Cathy Davies, CQ Studio*

**238. Walker, Chantal** Chatswood West, NSW  
The Imperfect, Yet Perfect, Circle of Life 231 x 196cm

**Pieced Quilt - Amateur**

Begun in a Jess Wheelahan class. This was a challenging quilt for me to design & create. Lack of symmetry & circle piecing drove me crazy, but like life, I soon settled into a good rhythm, accepted the imperfection, and found beauty in its chaos.

Design Source:Artful Improv Class by Jessica Wheelahan

**239. Coombes, Penelope** Bondi Junction, NSW  
For the Love of My Life Warwick 211 x 268cm

**Entrant's Quilt Top, Quilted by Another - Amateur**

A quilt of passion for the love of my life, Warwick Coombes. 1600 pieces of pattern and colour mix randomly to create a grand piano cover. Jessica Wheelahan's quilt 'Great Southern Land', my inspiration and Susan Smith's quilting enriches the work.

Design Source:Great Southern Land by Jessica Wheelahan

*Machine Quilted by: Sue Smith,*

**240. Bertram, Lyn** Warilla, NSW  
Dashwood with a Twist 240 x 240cm

**Appliqué Quilt - Professional**

This labour of love took four years in total to complete. I used the needle turn hand appliqué method, completing four large central blocks and joining them together before the border appliqué was done and then added to the quilt top.

Design Source: Dashwood designed by Donna Warren based on Lily Rosenberry Quilt by Sue Garmens

**241. Gunther, Tania** Springwood, NSW  
Not Quite Lucy 223 x 226cm

**Entrant's Top Quilted by Another - Professional**

I wanted to fit more of the honeycomb blocks into this quilt than in the original pattern, so I omitted the cornerstone blocks and butted them together. What looks like a 'Lucy Boston' quilt is slightly different – hence the name 'Not Quite Lucy'.

Design Source: Based on the designs of Lucy Boston

*Machine Quilted by: Susie Anderson, Leura Quilting*

**242. Goetz, Jennifer** Balmain East, NSW  
Star by Star 240 x 235cm

**Entrant's Quilt Top, Quilted by Another - Amateur**

This quilt was made for my daughter and son-in-law. Zoe has wanted me to make this quilt for a long time. She loves the stars and the charcoal grey and white looks fabulous in their Art Deco apartment.

Design Source: Christmas Stars by Linda Collins

*Machine Quilted by: Kay Murray, kayandquilting*

**243. Govey, Salley** Cremorne, NSW  
To Love and to Cherish 277 x 249cm

**Entrant's Quilt Top, Quilted by Another - Amateur**

The top was mostly constructed in 1987-88, however 'life' interrupted its completion until COVID galvanised a finish. Originally meant to celebrate our 10th Wedding Anniversary in 1991, 'To Love and to Cherish' now celebrates our 40th in December.

Design Source: The Double Wedding Ring Book', by Mary Ellen Hopkins 1981

*Machine Quilted by: Leanne Harvey, Mount Vincent Quilts*

**244. Raahauge, Elaine** Epping, NSW  
Lonely COVID Star 244 x 244cm

**Entrant's Quilt Top, Quilted by Another - Amateur**

This is a foundation pieced quilt using a Quiltsmart design called Broken Lone Star that I started ages ago. It is one of four UFOs that I was determined to finish during COVID restrictions when I was stuck at home feeling lonely.

Design Source: Broken Lone Star by Quiltsmart

*Machine Quilted by: Kay Murray, kayandquilting*

**245. Berkmann, Margarete** Wyongah, NSW  
Oriental Delight 256 x 223cm

**Pieced Quilt - Amateur**

Foundation paper pieced together. Based on a traditional quilt, I felt inspired by a curved Log Cabin block which I drafted. It was a long labour of love.

**246. Yip, Marj** Cobbitty, NSW  
Wheel of Fortune 240 x 200cm

**Display Only**

Traditional Wheel of Fortune design using mainly 1930's reproduction fabrics. Fun playing with appliqué pieces around the border.

*Machine Quilted by: Kaye Brown, The Finishing Touch*

**248. Reinhard, Susan** Putta Bucca, NSW  
Queen Anne Star 260 x 216cm

**Other Techniques - Professional**

Queen Anne Star was a once in a lifetime project. It took an epic three years to hand quilt, beginning with a pre-printed design.

Design Source: Design by Holic Turnbow

**249. Birchall, Narelle** Cooma, NSW  
Thelma's Garden 252 x 249cm

**Combined Pieced & Appliqué Quilt - Professional**

My own design referencing early 19th Century English Quilts which combined a central medallion, with an extensive array of printed cottons, and the combination of geometrical patchwork with broderie perse birds and flowers. Completely handmade.

**250. Tremain, Alan** Wyoming, NSW  
Welcome to the Jungle 280 x 280cm

**Entrant's Top Quilted by Another - Professional**

All kinds of species live in a corporate jungle called 'the office' and most are extremely talented in all the wrong ways. Various kinds of creatures can be found busy in their rituals, often called 'office life'. It is truly a miracle of coexistence

*Machine Quilted by: Sharon French, Morning Star Quilting*

**251. Rowles, Sue** Newtown, NSW  
Kinship Fusion Sampler 244 x 231cm

**Pieced Quilt - Professional**

I made this quilt as part of the Kinship Fusion Sampler 100 blocks in 100 days Sew-along on Instagram in 2019. I challenged myself to only work in a warm colour palette. I used the plaid layout.

Design Source: Kinship 100 Block Fusion Sampler by Angie Wilson and Bec Proschogo

**252. Walker, Annette** Wahroonga, NSW  
The Stonefields Quilt 239 x 239cm  
**Entrant's Quilt Top, Quilted by Another - Amateur**

The quilt was commissioned for a movie filmed in Ireland in 2014.

Design Source: The Stonefields Quilt by Susan Smith

*Machine Quilted by: Kay Murray, kayandquilting*

**253. Dubbelde, Elizabeth** Berry, NSW  
Blue Mood 2021 240 x 240cm  
**Art Quilt**

Deconstructed/reconstructed denim. The impact of fast fashion on our environment: 'ABC Lateline March 2017 - farmers in China & India could predict the next fashion season by the colour of their rivers from the runoff of the textile industry.'

**254. Wildsmith, Amanda** Paddington, NSW  
Heartbeat 240 x 280cm  
**Pieced Quilt - Amateur**

A central heart, surrounded by fabric I love (thank you Penny, Jane, Sharron, Chantal and Kathy).

Design Source: Based on a block designed by Wendy Williams, (Colour Play class at Material Obsession)

**255. Bardwell, Michelle** Surrey Hills, VIC  
Cathedral Rose 260 x 260cm  
**Appliqué Quilt - Professional**

This quilt is based on the North Rose Window at Notre Dame Cathedral in Paris. It is made largely from silk fabric, to replicate the glow of the stained glass. I understand that this window survived the recent devastating fire at the Cathedral.

Design Source: Interpretation of the North Rose window at Notre Dame Cathedral in Paris

**256. Anderson, Susie** Leura, NSW  
English Autumn 262 x 252cm  
**Combined Pieced & Appliqué Quilt - Professional**

'English Autumn' was made in class with Karen Cunningham back in 2003-2005 at Hearts and Hands. This quilt holds many memories for me as two of the appliqué borders were stitched whilst visiting family in England.

Design Source: Design by Karen Cunningham

**257. Barton, Tonia** Scone, NSW  
Hattie's Dream 198 x 182cm  
**Pieced Quilt - Amateur**

I enjoyed the bright and happy colours of this quilt. The construction was a challenge.

Design Source: Hattie's Dream by Jean Nolte

**258. Dear, Kerry** Newport, NSW  
Tangerine Dream 188 x 190cm  
**Appliqué Quilt - Professional**

I attended a class with Marg Sampson-George and took along the centre piece of fabric. Together we worked outwards to create this quilt. Some of the appliqué patterns were from Margaret's collection and others were my own design.

Design Source: Class with Margaret Sampson George

**259. Gontier, Wendy** Lang Lang, VIC  
Nette's Flying Wedgee 184 x 184cm  
**Modern**

Dedicated to my friend Jeanette! Inspired by Stunning circle quilts class, the desire to create an aeroplane front view from a wedge ruler, some faux trapunto & wild quilting. Nette's cheers from heaven made this all possible.

Design Source: Stunning Circle Quilt by Andi Perejda

**260. Cassidy, Christina** Telopea, NSW  
Round the Tree 181 x 171cm  
**Entrant's Quilt Top, Quilted by Another - Amateur**

This is my version of Wendy Williams' 'Round the Garden' quilt pattern. The professional quilting is done by Kay Murray using a long arm machine, A1 Elite, hand guided no computer.

Design Source: Round the Garden by Wendy Williams

*Machine Quilted by: Kay Murray, kayandquilting*

**261. Beattie, Andrea** North Sydney, NSW  
A Suitable Wagga 184 x 159cm  
**Pieced Quilt - Amateur**

A Wagga style quilt made from fine wool suit samples. The tradition of reusing fabric continues.

**262. Butterworth, Catherine** Lindfield, NSW  
Fantastic Plastic 172 x 145cm  
**Modern**

I was thrilled to find pink and orange neon fabrics. Teaming them with the black fabric seemed like a match made in heaven. This modern adaptation of the traditional Winding Ways block presents yet another twist when viewed as a flash photograph.

**263. Chidgey, Hannah** Boambee, NSW  
Flower Fences 180 x 145cm  
**Junior Member B (Year 7-12)**

Hannah gathered fabrics from her Mum's stash and arranged the colours and started designing. Rail Fence blocks in different colours and put together with sashing and borders. Machine quilted by Hannah.

**264. Masters, Maya** Grafton, NSW  
Maya's Charm 188 x 162cm  
**Junior Member A (up to Year 6)**

Maya's first quilt made from two packs of charm squares. Squares sewn in sets of four with cream sashing. Maya machine quilted the quilt on a long arm quilting machine.

**265. Mackinlay, Grace** Forestville, NSW  
Little Bug 186 x 172cm  
**Junior Member A (up to Year 6)**

150 hand cut triangles sewn together by machine. I chose this design because it looked like the most fun.

Design Source:Scrappy Sixties by Anka's Treasures

**268. Waite, Oliver** Grafton, NSW  
Fire Wall 200 x 180cm  
**Junior Member A (up to Year 6)**

Half Square Triangle in red-orange and black. Machine pieced. Quilted on longarm quilting machine.

**269. Lewis, Caesar** Medowie, NSW  
Lighthouse 60 x 90cm  
**Junior Member A (up to Year 6)**

I came up with a lighthouse & ocean idea after getting some grey fabric that reminded me of storms. An original design I have rotary cut & stitched every piece of this quilt myself. Mum takes videos of me doing it. The rocks are a result of experimenting.

**270. Steinbeck, Amisha** Bellingen, NSW  
Contrasting Beauty 80 x 100cm  
**Junior Member B (Year 7-12)**

Inspired by the contrasting beauty of native versus non-native flora after attending a workshop with Denise Griffiths in 2019. Denise taught her unique 3D technique called Baglique using interfacing and pellon. Completed with free motion quilting.

**271. Waite, Thea** Grafton, NSW  
Flutterbye 100 x 100cm  
**Junior Member A (up to Year 6)**

Crazy cutting blocks to create 4 butterfly blocks. My first quilt.

Design Source:Adapted from a pattern in Cut-Loose Quilts by Jan Mullen

**272. Bowers, Olivia** Baulkham Hills, NSW  
Snorkelling 147 x 94cm  
**Junior Member A (up to Year 6)**

When I go snorkelling at Lady Elliot Island on the Great Barrier Reef, and I come up for a breath, I can see under water and the land through my goggles. Colourful fish, playful turtles, octopii, sand and swaying palm trees all at once. It's magical!

**273. Lewis, Scarlett** Medowie, NSW  
Donut Dreams 168 x 168cm  
**Junior Member B (Year 7-12)**

I designed this sweet Donut quilt. I used strips of pretty fabrics, added Sprinkles & 100s and 1000s to them. Someone took a bite out already! I cut the fabrics, stitched every stitch and quilted this myself. My mum videos me making my quilts.

**274. Gower, Barbara** The Oaks, NSW  
Renewed Pathways 170 x 53cm  
**Art Quilt**

Pathways are important physically and mentally as they lead us backwards or forwards. Mending a pathway takes time and patience, but is worth the effort. This work uses mending techniques to repair worn kimono silks. The bright scraps symbolise hope.

**275. Firth, Dianne** Turner, ACT  
From the Sea 208 x 92cm  
**Art Quilt**

This work is a meditation on the endangered status of many sea creatures such as the whale shark. Purple spots edged with orange were inserted into a brown wool blanket to create an impression of size, form and movement.

**276. Lambert, Roslyn** Tarrawanna, NSW  
Tumbling Eggs 173 x 155cm  
**Modern**

I had all these bright fabrics and a wedge ruler. I started with a hexagon shape as there were 3 main colours, drafted out the oval shape, had it enlarged and it developed from there.

**277. Rofe, Jenny** Bolwarra Heights, NSW  
Bits And Pieces 170 x 115cm  
**Other Techniques - Professional**

Quilt made from many bits and pieces. Old class samples, scraps normally discarded, old favourite fabrics. Hand embroidery, crazy patchwork and appliqué feature on hexagon blocks. Black silk velvet used to back the quilt-as-you-go hexagons.



## Index of Exhibitors

Aitken, Liz	90	Cheng, Selina	96	Hall, Alvena	31
Albury, Rebecca	11	Chidgey, Hannah	263	Hall, Linda	129
Alexander, Shelia	67	Chilton, Jillian	164	Harding, Julie	24
Allen, Stephanie	50	Cook, Lois	146	Haron, Nicky	61
Anderson, Susie	256	Coombes, Penelope	239	Harradine, Colleen	23
Andrews, Anne	206	Crouch, Linda	169	Harris, Robyn	223
Aubrun, Suzanne	20	Da Mata, Carolina	139	Harvey, Leanne	196
Austin, Chris	82	Daly, Amanda	42	Hastings, Rebecca	120
Avalon Quilters	111	Davies, Petal	13	Hayes, Helen	114
Bacon, Jenny	71	Davis, Jennifer	174	Hemming, Darlene	158
Badovinatz, Denise	9	Day, Judy	27	Hennessy, Terry	138
Baird, Hilda	226	de Vanny, Sue	70	Anne	
Bardwell, Michelle	255	Dear, Kerry	258	Henriksson,	230
Barton, Jacqueline	113	Delandro, Jenny	72	Philomena	
Barton, Tonia	257	Denham, Lorna	132	Hewitt, Lynn	117
Beattie, Andrea	261	Denneny, Rachelle	205	Higgs, Sonia	183
Beer, Sheila	41	Dennis, Sue	29	Hoffman, Birgit	234
Berkmann,	245	Dickson, Janette	202	Hogg, Judy	30
Margarete		Docksey, Judy	6	Hooworth, Judy	60
Bertram, Lyn	240	Dodd, Rachael	187	Hough, Kim	221
Betts, Belinda	34	Donovan, Sandra	178	Howse, Janet	219
Birch, Martha	108	Doughty, Kathy	217	Hunter, Beverly	126
Birchall, Narelle	249	Doyle, Rachael	203	Hurter, Rosemary	85
Bird, Lynne	155	Dubbelde, Elizabeth	253	Illawarra Moderns	160
Blue Mountains	218	Dunstan, Cath	110	Iwanczuk, Maralyn	92
Quilters Inc		Evans, Julie	105	James, Robert (Bob)	83
Boland, Donna	36	Evans, Leesa	130	Jamieson, Kaye	79
Bonner, Liz	186	Firth, Dianne	275	Jenkins, Robyn	200
Booth, Donna	2	Flockhart, Kristine	198	Jobbins, Di	76
Boundy, Glenda	161	Fooij, Helena	189	John, Karen	148
Bowdler, Patricia	122	Frankham, Jane	99	Johnson, Lisa	145
Bowers, Olivia	272	Frazer, Jan	95	Jurd, Chris	109
Breeze, Jennie	22	Gallegos, Debra	144	Kanitkar, Pradnya	65
Brodie, Trudy	176	Garlick, Kim	167	Kelly, June	175
Brown, Anita	118	Geczy, Jenny	152	Keneally, Jane	185
Brown, Anna	53	Gibson, Jane	19	Kennedy, Julie	37
Browne, Jan	28	Goetz, Jennifer	242	Kennewell, Ingrid	59
Buchanan, Ruth	142	Gontier, Wendy	259	Keogh, Lyn	86
Budd, Meredith	215	Gordon, Carolynne	135	Klompe, Isabella	201
Butler, Gary	149	Govey, Salley	243	Knudsen, Stephanie	115
Butterworth,	262	Gower, Barbara	274	Kondratenko,	43
Catherine		Grace, Pauline	66	Christine	
Campbelltown	214	Graham, Kaye	222	Krige, Bernice	157
Patchwork & Quilters		Griffiths, Denise	35	Laird, Suzanne	173
Guild		Griffiths, Sue	235	Lambers-Kelly, Isabel	136
Cardie, Jan	18	Grove, Stephanie	3	Lambert, Roslyn	276
Carter, Janet	211	Groves, Diane	89	Lancashire, Isobel	121
Cashman, Rae	237	Gunther, Tania	241	Lancaster, Linden	106
Cassidy, Christina	260			Langhorne, Rhonda	147
Chapman, Jennifer	15				

Langley, Ann	84	Ritson, Kerry	32	Waite, Thea	271
Laurie, Deborah	119	Roberts, Marianne	78	Wakely, Kerry	107
Law, Michelle	56	Roberts, Yvonne	236	Walker, Annette	252
Layt, Deb	48	Rofe, Jenny	277	Walker, Chantal	238
Leath, Jocelyne	5	Rogerson, Sue	62	Wallbridge, Glenys	137
Leitch, Carol	52	Rona, Judith	14	Wallin, Margie	170
Lemin, Brian	45	Rose, Elizabeth	209	Walton, Lisa	46
Lewandowski, Sharon	212	Ross, Claire	180	Waters, Mariya	140
Lewis, Caesar	269	Rouse, Pamela	216	Webeck, Anne	93
Lewis, Clare	227	Rowles, Sue	251	Welsh, Wendy	233
Lewis, Scarlett	273	Rundle, Jane	213	West, Laura-Mae	4
Louie, Deborah	128	Russell, Pam	26	Westmacott, Pamela	125
Lyons, Sandra	81	Sadleir, Gail	44	Wheelahan, Jessica	101
Mackinlay, Grace	265	Sargo, Denise	47	Whellum, Wendy	195
Mackley, Cynthia	63	Saunders, Rebecca	98	Widders, Grace	102
Magnay, Susan	39	Scobie, Julie	80	Wildsmith, Amanda	254
Markham, Alison	64	Sefton, Dianne	191	Williams, Wendy	123
Marley, Sharon	116	Serong, Chris	141	Williams, Yvonne	55
Martyn, Vicki	179	Sharkey, Caroline	10	Wise, Glenda	143
Masters, Maya	264	Shea, Kate	100	Yip, Marj	246
Masterton, Dorothy	225	Shipton, Robyn	75		
Matter, Françoise	134	Singleton Quilters Inc	194		
McDonald, Margaret	210	Smith, Brenda Gael	74		
McGoogan, Lauren	207	Smith, Louise	104		
Merriel, Shirley	192	Spann, Betsie	204		
Middleton, Heather	94	Sparkles, Molli	88		
Moody, Diane	131	Sperring, Jennifer	153		
Morrison, Stephanie	172	Stacy, Miriam	177		
Mortensen, Suzanne	229	Steinbeck, Amisha	270		
Mosely, Catherine	124	Stewart, Karen	168		
Moules, Roslyn	33	Stringer, Jennifer	112		
Nelson Bay Quilters	197	Stuart, Louise	182		
Nicholls, Margaret	58	Sullivan, Carolyn	25		
Nicholls-Thomson, Sharon	87	SydModSquad	220		
Nikoleski, Judi	7	Sydney Modern Quilt Guild	188		
Noonan, Prunella	21	Syrett, Margy	184		
Nugent, Monique	127	Tait, Helen	57		
Nutt, Wendy	69	Tanti, Tania	103		
Ochtman, Wendy	190	Teager, Maureen	77		
Ogle, Helen	208	Thompson, Skye	228		
Parker, Lorraine	51	Thorncraft, Kathy	73		
Parr, Angelique	166	Thrift, Lynette	156		
Pearce, Merelyn	68	Timmins, Chris	163		
Porter, Catherine	16	Tramontana, Di	38		
Pousderkos, Trisha	12	Treen, Janet	165		
Power, Susan	150	Tremain, Alan	250		
Pritchard, Denise	231	Tyler, Mandie	154		
Raahauge, Elaine	244	Uriarte, Lorena	199		
Reinhard, Susan	248	Waite, Oliver	268		
Reynolds, Joan	159				