



'BLUE HEXAGONS'

A traditional hand stitched quilt project
blue/white colourway.

Arterie is delighted to introduce our latest textile project Blue Hexagons, designed and delivered in conjunction with QuiltNSW. These hexagon flowers are made using the english paper piecing (EPP) patchwork technique. EPP involves folding a piece of fabric around a paper shape, in this case, a hexagon, and securing the fabric to the paper either with tacking stitches or some basting glue. The hexagons are then joined with a whipstitch or ladder stitch. EPP is very transportable and addictive – a perfect antidote to a

busy day and allows you to make the most of waiting/ public transport time.

Your kit contains:
19 pieces fabric
1" hexagon papers (19)
Needle and thread
2 paper clips

Please spread the word - all quilters are invited to participate - just stick to the selected colour way of blue (in all its shades, tints & values) and white. Could this be Australia's largest hexagon quilt in the making?

For further information on the Arterie program please contact Deborah.

ARTERIE

ARTS + HEALTH + EDUCATION

. CARTERIES

. WORKSHOPS

. ARTIST IN RESIDENCES

.LECTURES - ART + MED

CONTACT

DEBORAH BURDETT

E deborah.burdett@lh.org.au

M: 0429100960

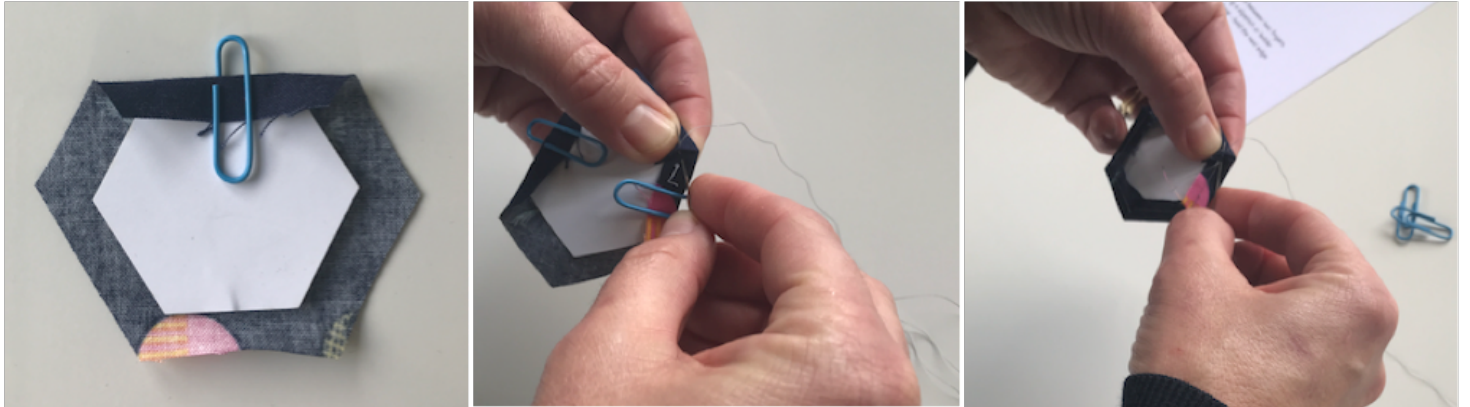
CHRIS O'BRIEN LIFEHOUSE

119 MISSENDEN RD

CAMPERDOWN NSW 2050

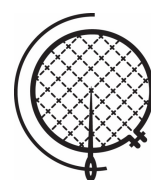
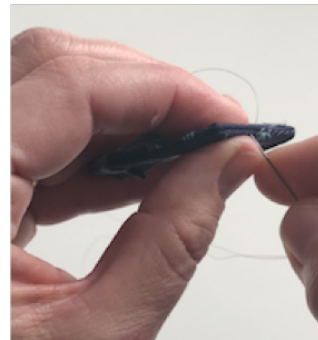
Getting the pieces ready:

- 1 Thread your needle and knot one end of the thread.
- 2 Lay a paper template against the wrong side of a piece of fabric (centering it in the middle of the fabric) and fold over one side and secure it with a paper clip as shown below.
- 3 Fold over the opposite side (secure it with a paper clip if you need to) and then fold the next side creating a neat corner at the corner as shown below. Take a small stitch in the fold.
- 4 Fold the next side over and repeat the small stitch in the next corner.
- 5 Repeat this tacking stitch until you are back to the start. Cover all 19 papers in this way.



Sewing the hexagons together:

1. Place two hexagons right sides together and hold wrong sides (sides with the raw edges and tacking stitches) between two fingers. Stitch the two shapes together along one set of edges using a whipstitch or ladder stitch – see photos below for a guide. At the end of an edge, open up and add the next shape - hold the next edge to be sewn together in the same way as before and sew along this edge. Keep adding shapes building towards the hexagon flower shape. (Note: there is no need to end your thread after sewing one side – just turn your work and continue joining another edge. You can also 'run' the thread across the back of a hexagon to reach another side that needs joining.)
2. Continue until you have joined the 19 hexagons into the hexagon shape. A flower towards a wonderful garden that will be grouped with others to form a wonderful patchwork wall hanging.



QuiltNSW

The Quilters' Guild of NSW Inc
Level 5, 276 Pitt St Sydney NSW 2000 - 02 9283 3737
office@quiltsw.com - www.quiltsw.com